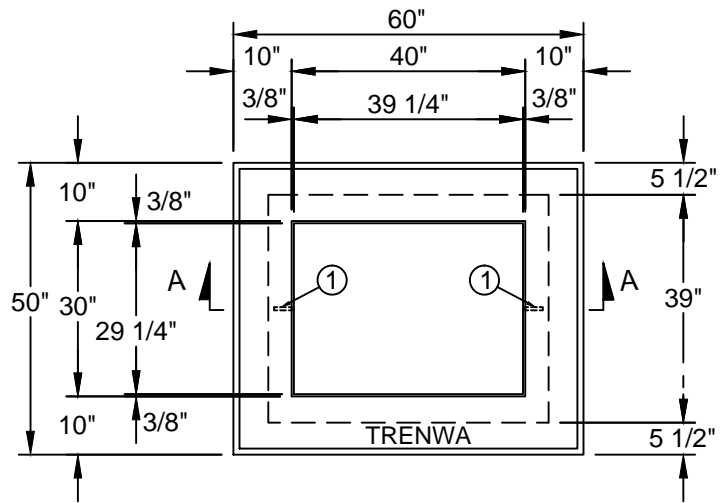
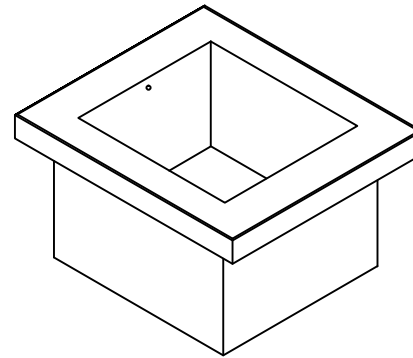


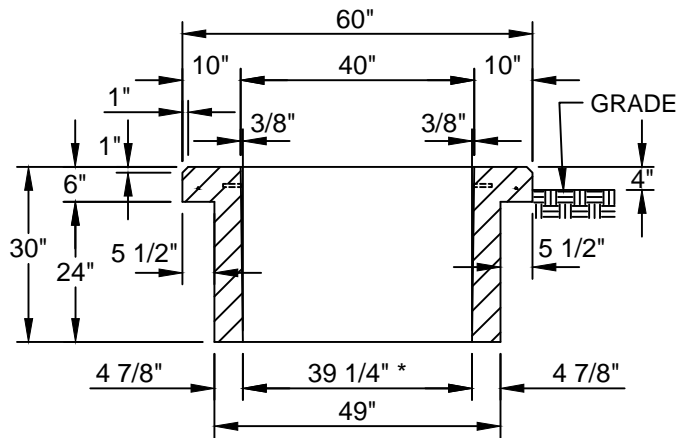
QA Checklist		Initial
Pre-pour	Dimensions & Mesh	
	Block Outs	
	Inserts, Chairs	
	Lifting Devices	
	Form Oil	
	Form Condition	
Post-pour	Cover > 1/2"	
	Lifting Devices	
	Defects	
	Dimensions	
	Date Manufactured	
Stenciled		



PLAN VIEW



DEAD FRONT SWITCHGEAR PAD



SECTION A-A

\* 3/8" TAPER ALL SIDES

NOTES:

1. LIFTING COIL INSERT SHALL BE 3/4 x 3 MEDCO CX24 OR EQUAL.
2. CONCRETE SHALL HAVE MINIMUM STRENGTH OF 3,000 PSI AT 28 DAYS.
3. CURING TIME BEFORE DELIVERY SHALL BE A MINIMUM OF 14 DAYS AS LONG AS MINIMUM STRENGTH OF 3,000 PSI HAS BEEN ACHIEVED.
4. ALL REINFORCING BARS SHALL BE GRADE 60 WITH YIELD STRENGTH OF 60,000 PSI. ALL REINFORCING BARS SHALL BE WELDED OR TIED.

APPROX. 2,340 #

<b>Trenwa Inc.</b>		1419 Alexandria Pike Fort Thomas, KY 41075
(859) 781-0831		
SCALE: 3/8"=1'-0"	DRAWN BY: BD	DATE: 5/11/2016
<b>TAMPA ELECTRIC COMPANY</b>		
PRECAST PAD FOR 200 AMP- 3 PHASE DEAD FRONT SWITCH GEAR (DFSG)		TEC. NO. <b>2001318</b>