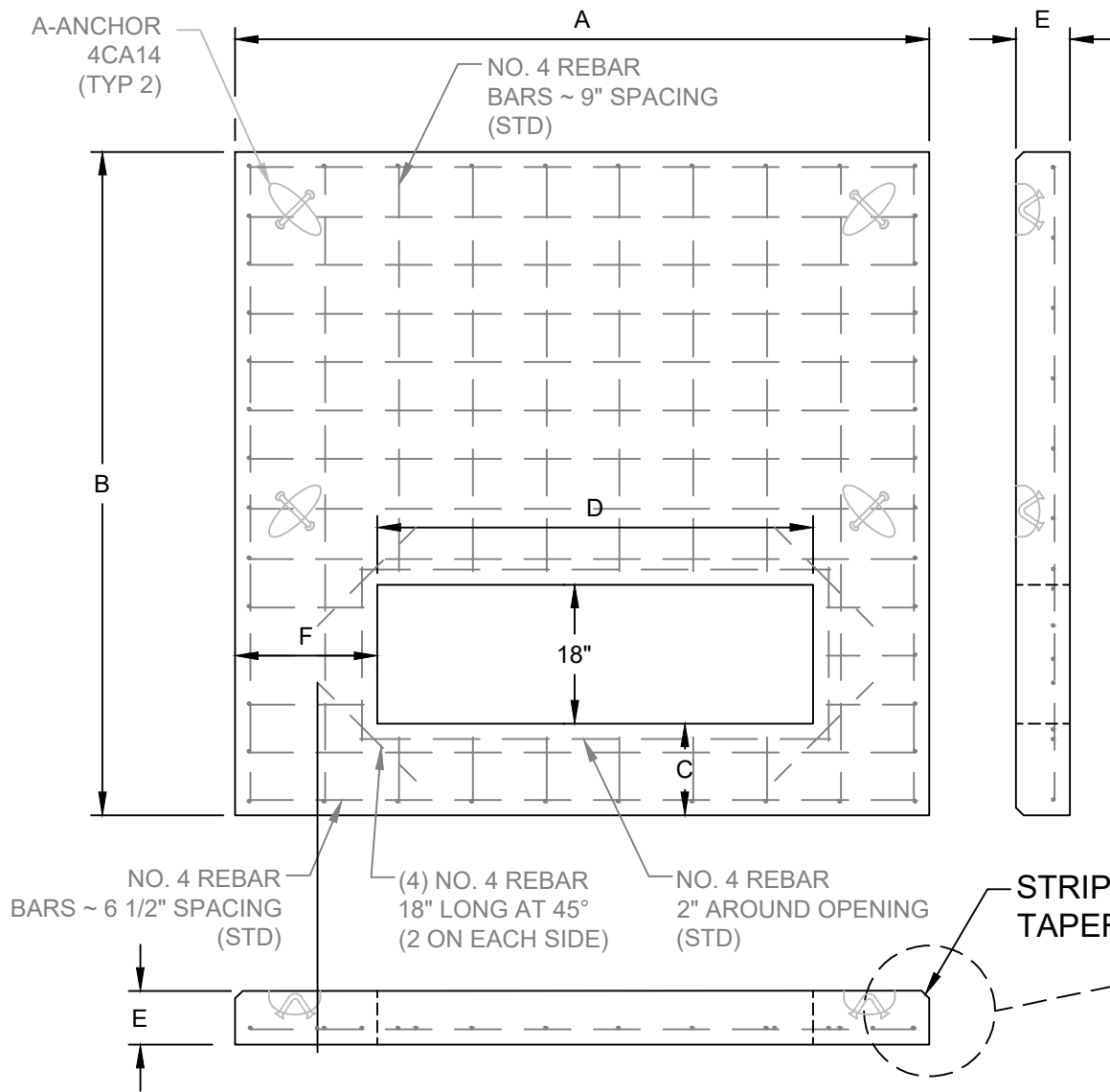


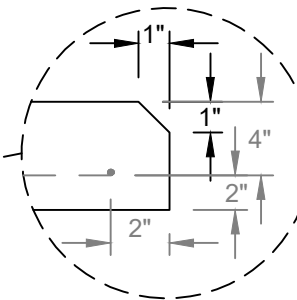
QA Checklist		Initial
Pre-pour	Dimensions & Mesh	
	Block Outs	
	Inserts, Chairs	
	Lifting Devices	
	Form Oil	
	Form Condition	
Post-pour	Cover > 1/2"	
	Lifting Devices	
	Defects	
	Dimensions	
	Date Manufactured	
Stenciled		



**3-PHASE TRANSFORMER PAD**  
**SECO STOCK # 43503004, 43503005**

1. CONCRETE TESTING, 4,000 LBS PER SQUARE INCH: 4% TO 6% ENTRAINED AIR, 3/4" MAXIMUM SIZE AGGREGATE.
2. REINFORCING STEEL, ASTM-A615 GRADE 60, PLACE APPROXIMATELY 6" O.C. EACH WAY AND SECURELY TIED TOGETHER.
3. MINIMUM CONCRETE COVER OVER REINFORCING STEEL 3" UNLESS NOTED.

STRIPPING TAPER



SECO STOCK #	3-PHASE TRANSFORMER KVA	DIMENSIONS IN INCHES					
		A	B	C	D	E	F
43503004	75, 150, 225, 300, 500	76	72	10	50	6	17
43503005	750, 1000, 1500, 2500, 3750	104	100	10	54	8	25



1419 ALEXANDRIA PIKE  
 FORT THOMAS, KY 41075  
 859-781-0831

DRAWN BY: KD

DATE: 8/31/2020

SECO ENERGY

GUIDE FOR THREE PHASE  
 TRANSFORMER PAD

UG17G