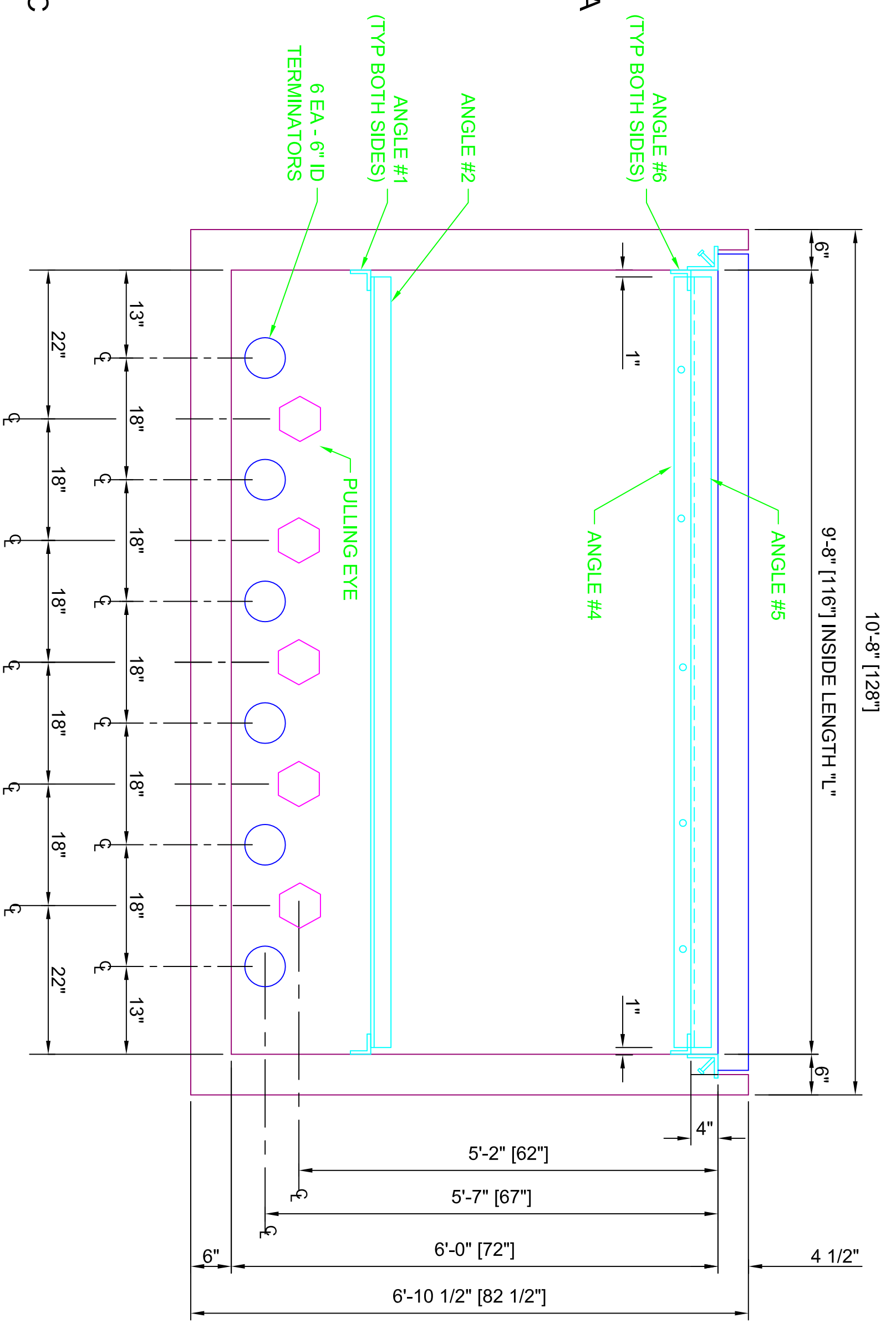
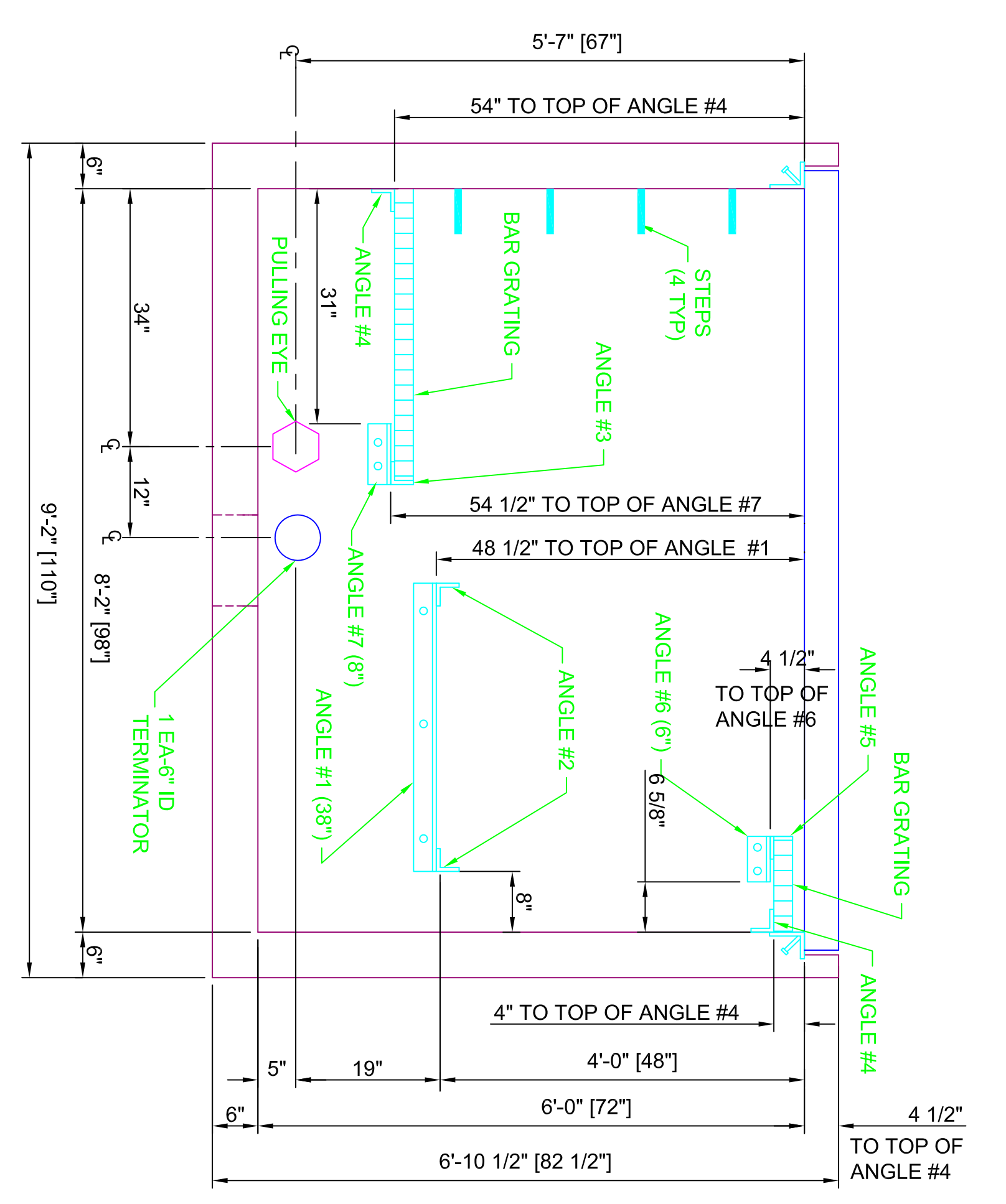


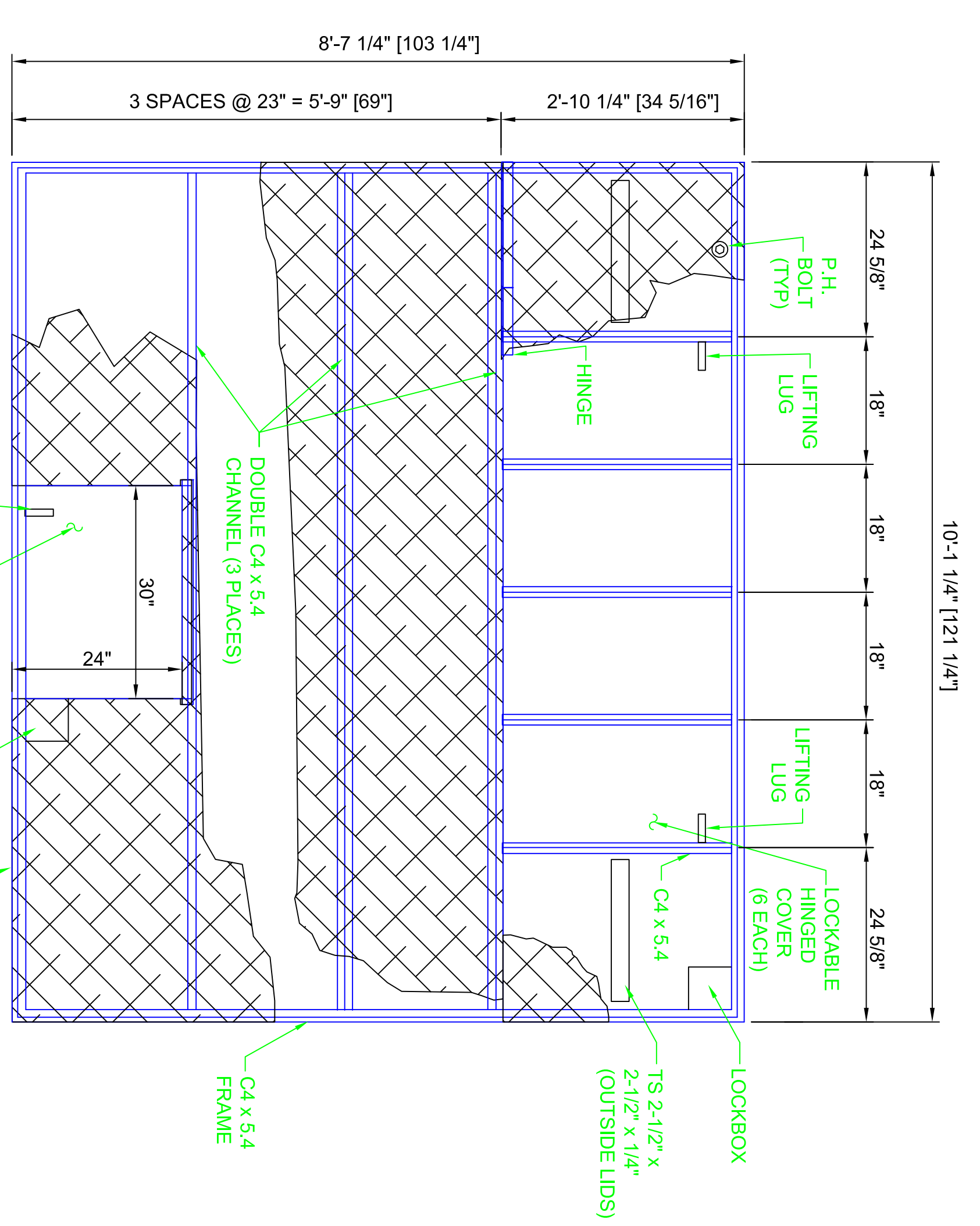
PLAN VIEW
(ANGLE SUPPORTS OMITTED FOR CLARITY)



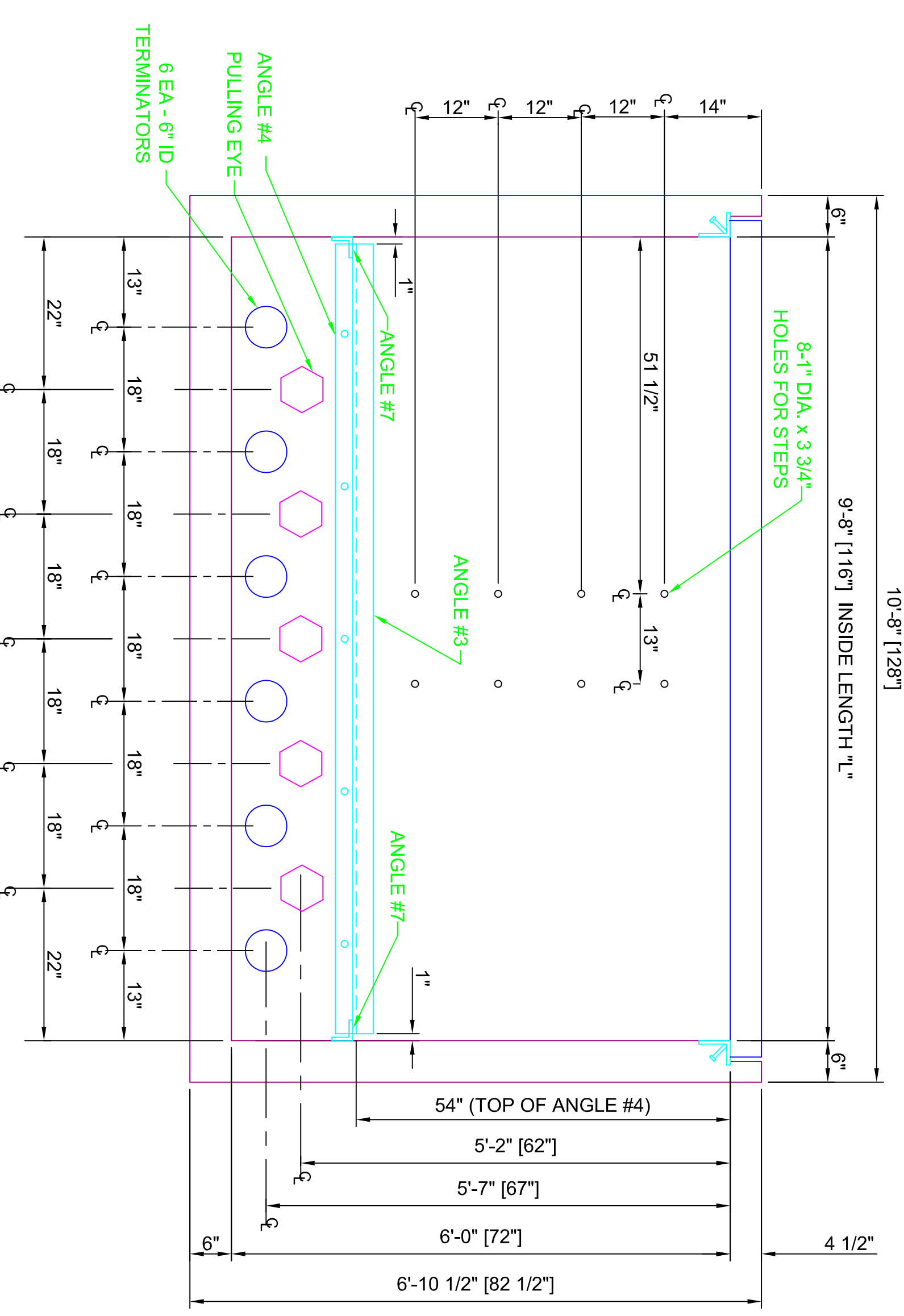
SECTION VIEW A-A
(SWITCH GEAR END
STANDING INSIDE BOX)



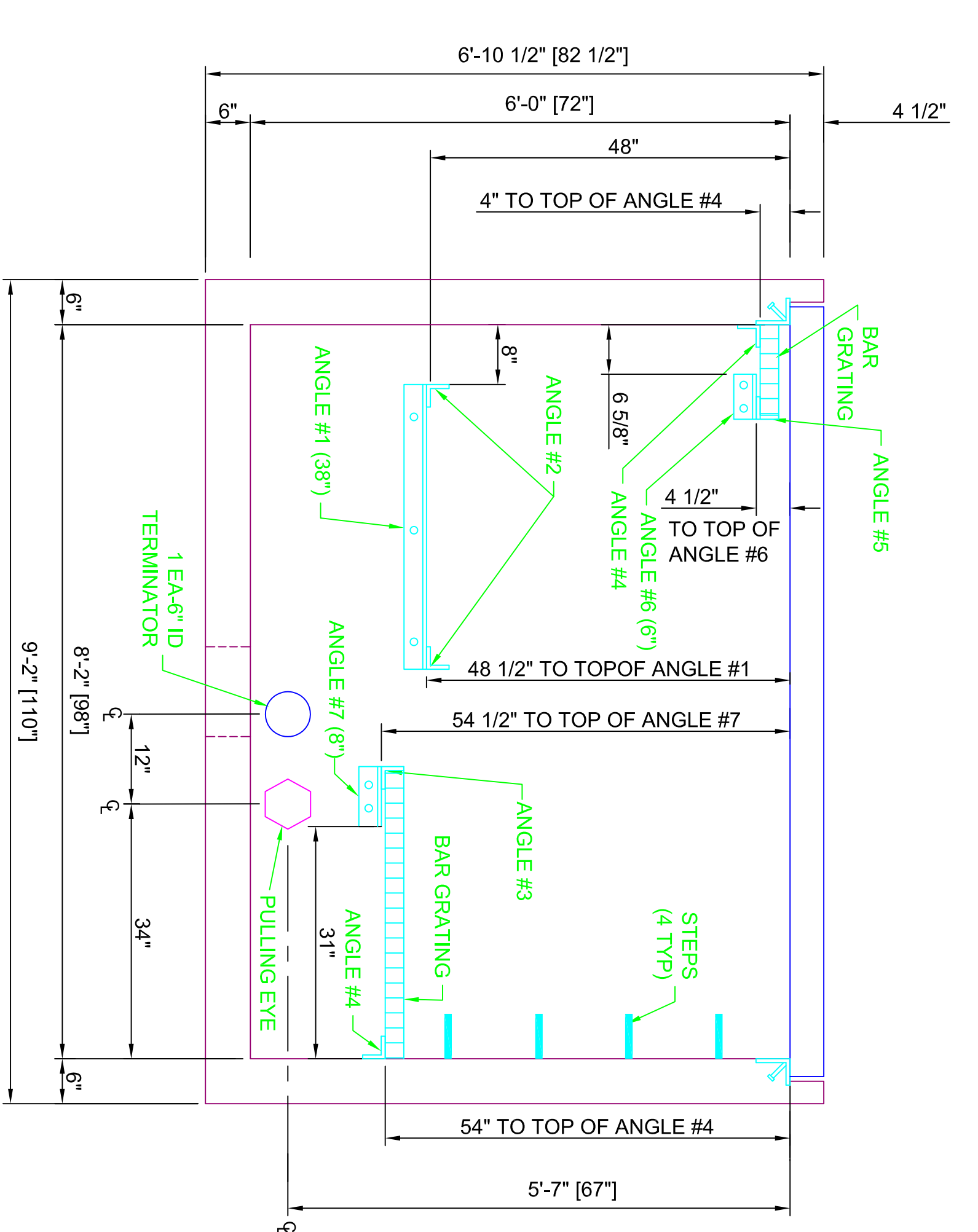
SECTION VIEW B-B
(STANDING INSIDE BOX)



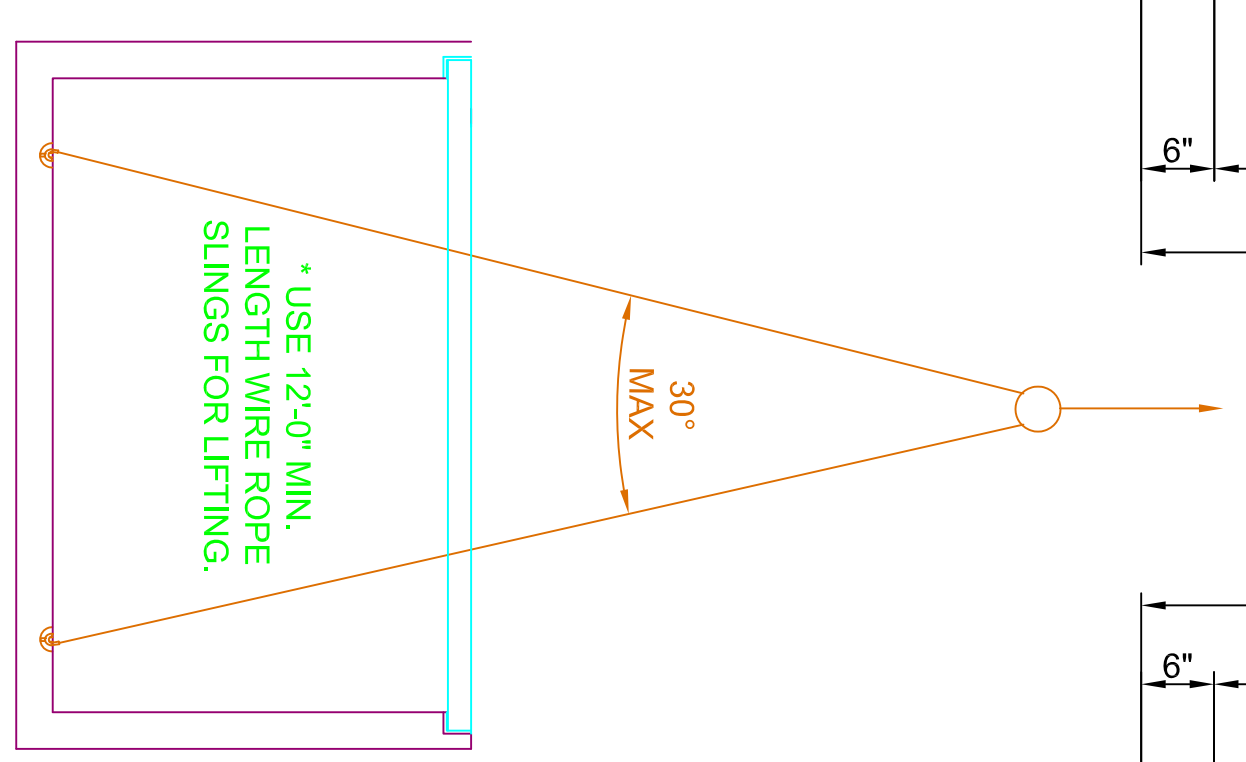
PLAN VIEW - LID
300 PSF LIVE LOAD
(NOT DESIGNED FOR VEHICULAR TRAFFIC)
HOT DIPPED GALVANIZED



SECTION VIEW C-C
(STANDING INSIDE BOX)



SECTION VIEW D-D
(STANDING INSIDE BOX)



LIFTING DETAIL

NOTE:
CONCRETE BASE WEIGHT = 22,500#
STEEL LID WEIGHT = 1,500#

NO.	DATE	BY	REVISION

Trenwa Inc.
FORT THOMAS, KY 41075 859-781-0331
SCALE: 3/4" = 1'-0"
DATE: March 4, 2010 ARCH D-SIZE DRAWING APPROVED BY: KR
6 WAY LIGHT DUTY VAULT-STEEL LID PLOT 1:1
S&C ELECTRIC 38KV VISTA SWITCHGEAR
DRAWING NUMBER 6WLD38-S