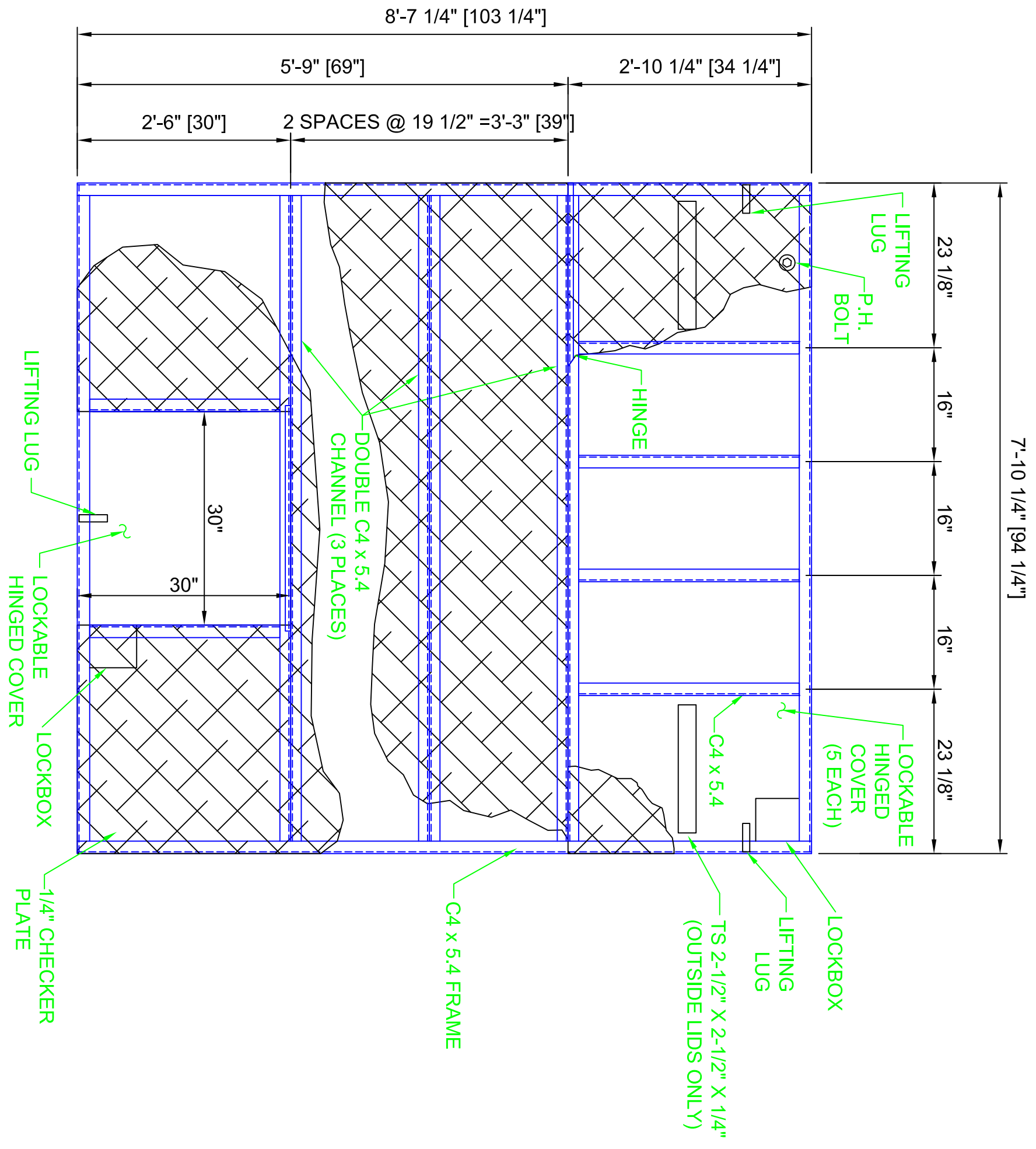
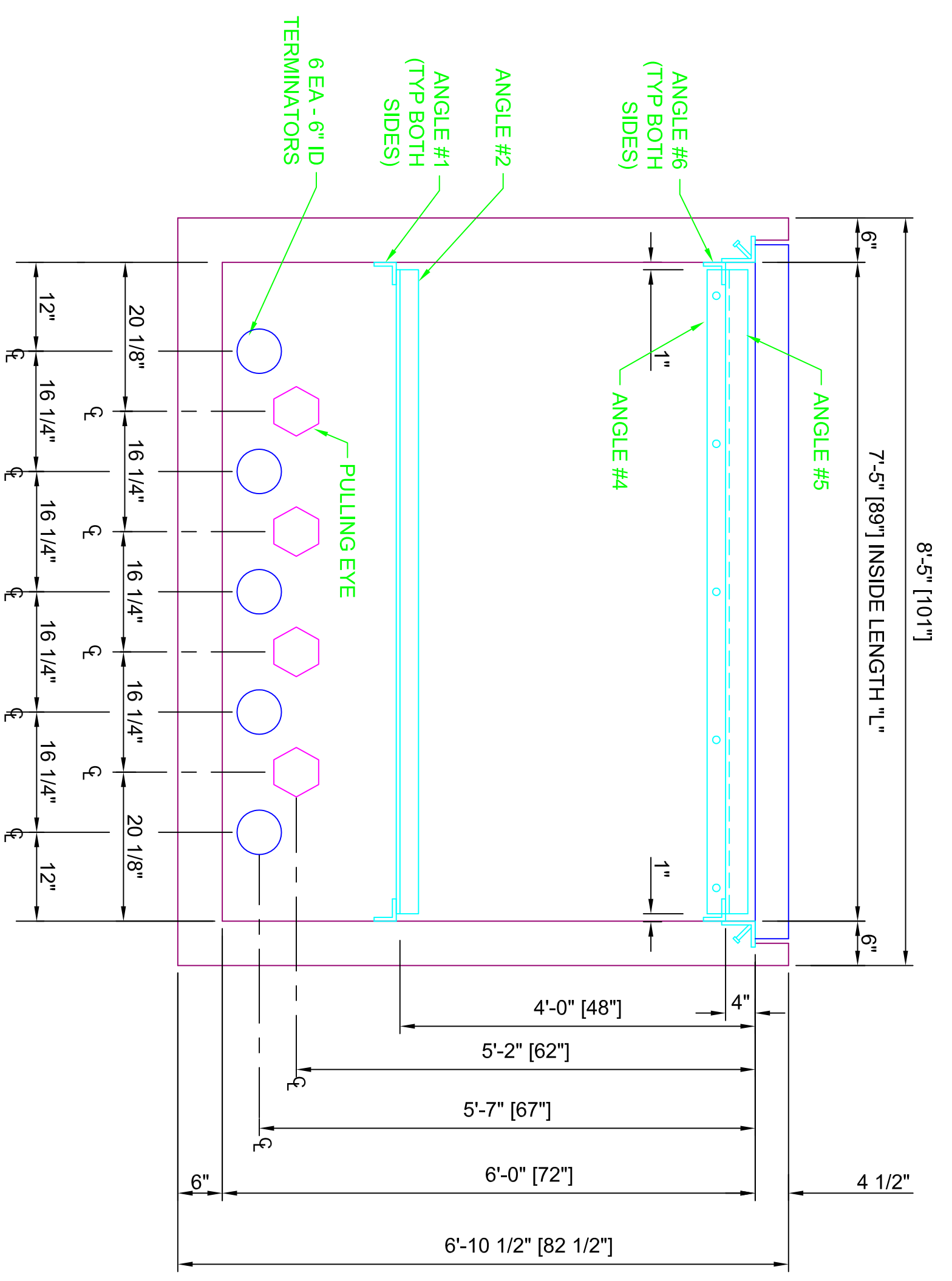


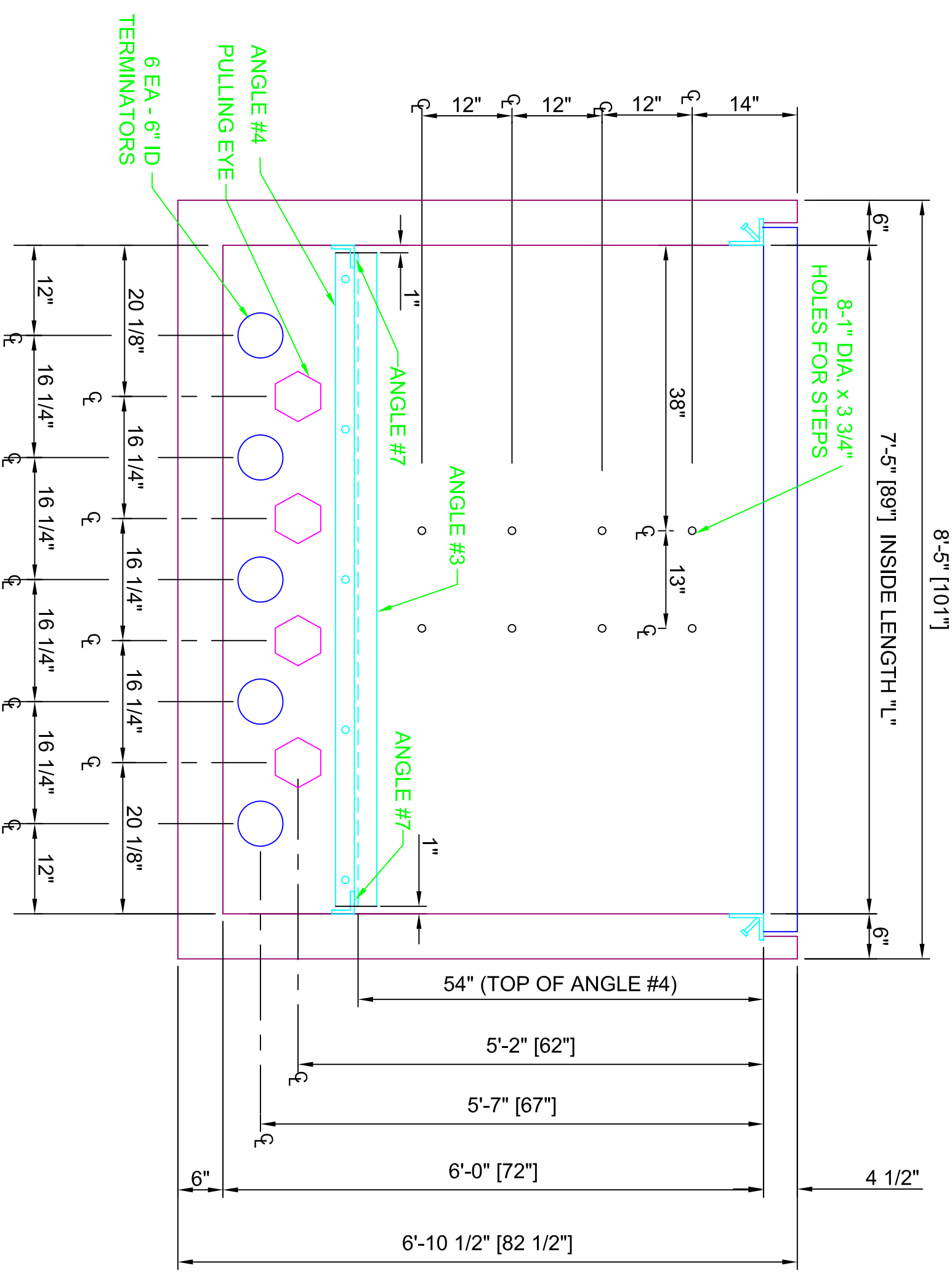
PLAN VIEW
(ANGLE SUPPORTS OMITTED FOR CLARITY)



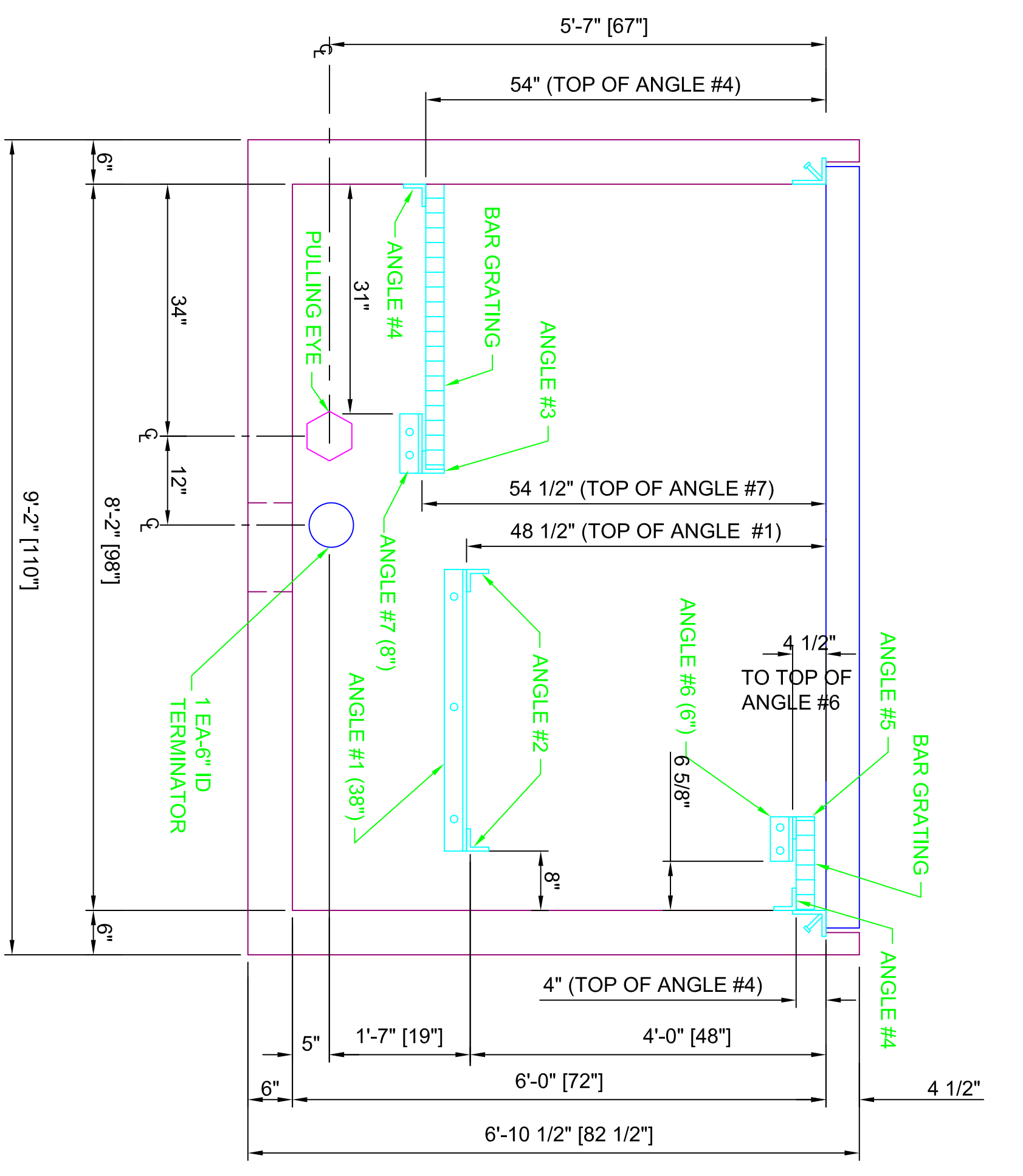
PLAN VIEW - LID
300 PSF LIVE LOAD
(NOT DESIGNED FOR VEHICULAR TRAFFIC)
HOT DIPPED GALVANIZED



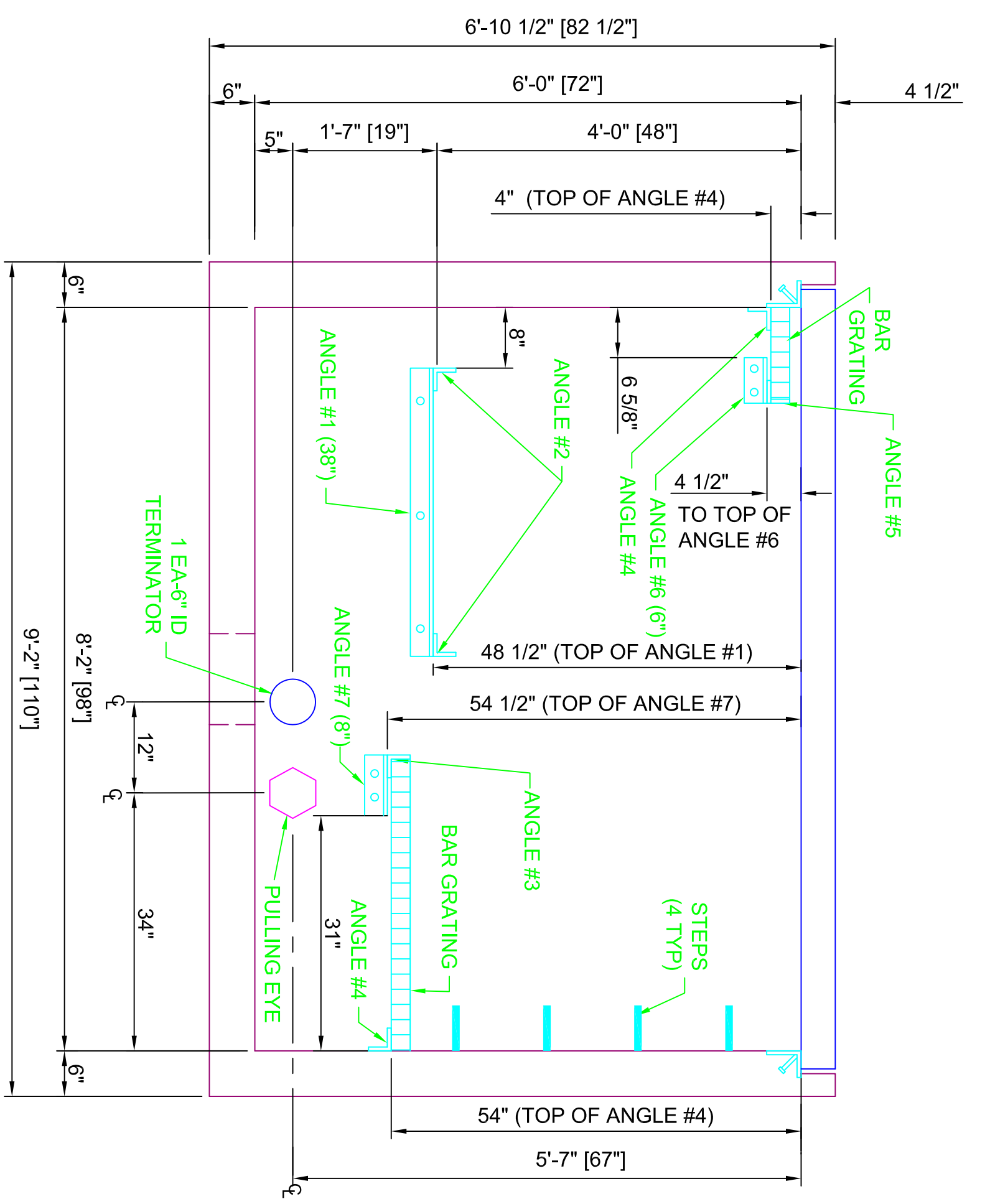
SECTION VIEW A-A
(SWITCH GEAR END
STANDING INSIDE BOX)



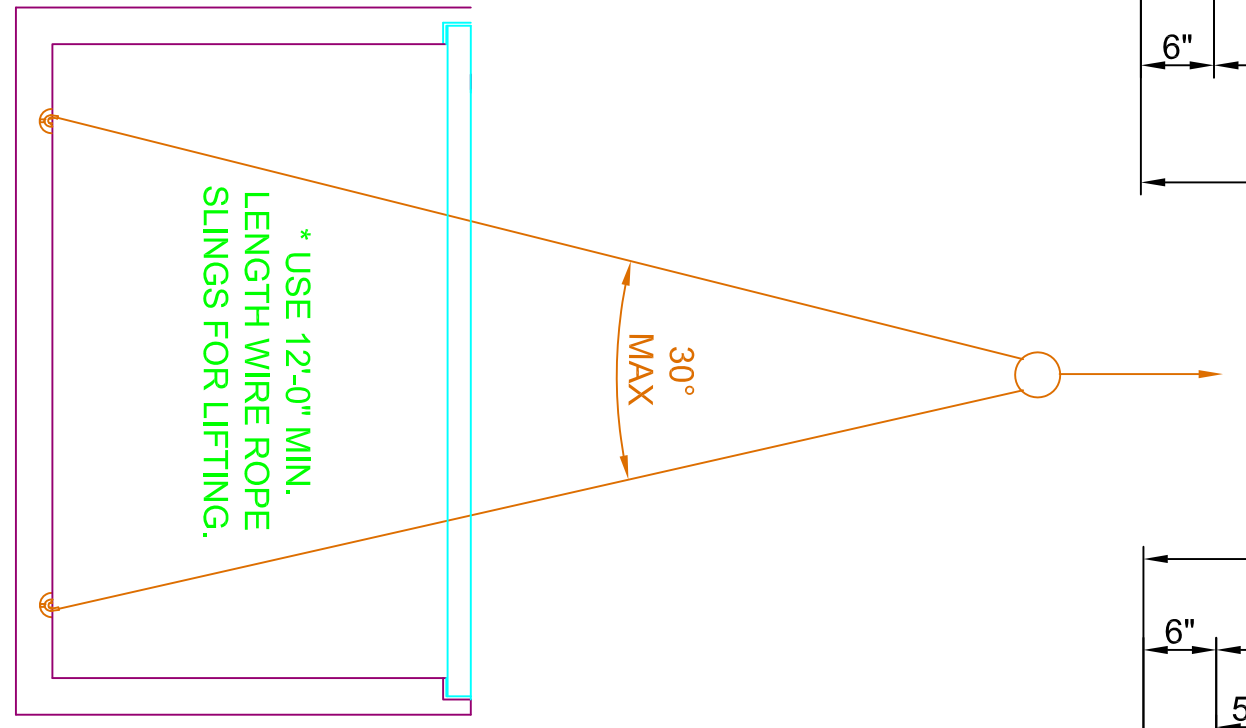
SECTION VIEW C-C
(STANDING INSIDE BOX)



SECTION VIEW B-B
(STANDING INSIDE BOX)



SECTION VIEW D-D
(STANDING INSIDE BOX)



LIFTING DETAIL

NOTE:
CONCRETE BASE WEIGHT = 20,500#
STEEL LID WEIGHT = 1,300#

NO.	DATE	BY	REVISION

Trenwa Inc.
FORT THOMAS, KY 41075 859-781-0831
SCALE: 3/4" = 1'-0"
DATE: MARCH 1, 2013 ARCH-D-SIZE DRAWING PLOT 1:1 APPROVED BY: KR
5 WAY LIGHT DUTY VAULT-STEEL LID
S&C ELECTRIC 15.5KV VISTA SWITCHGEAR
DRAWING NUMBER 5WVLD15-S