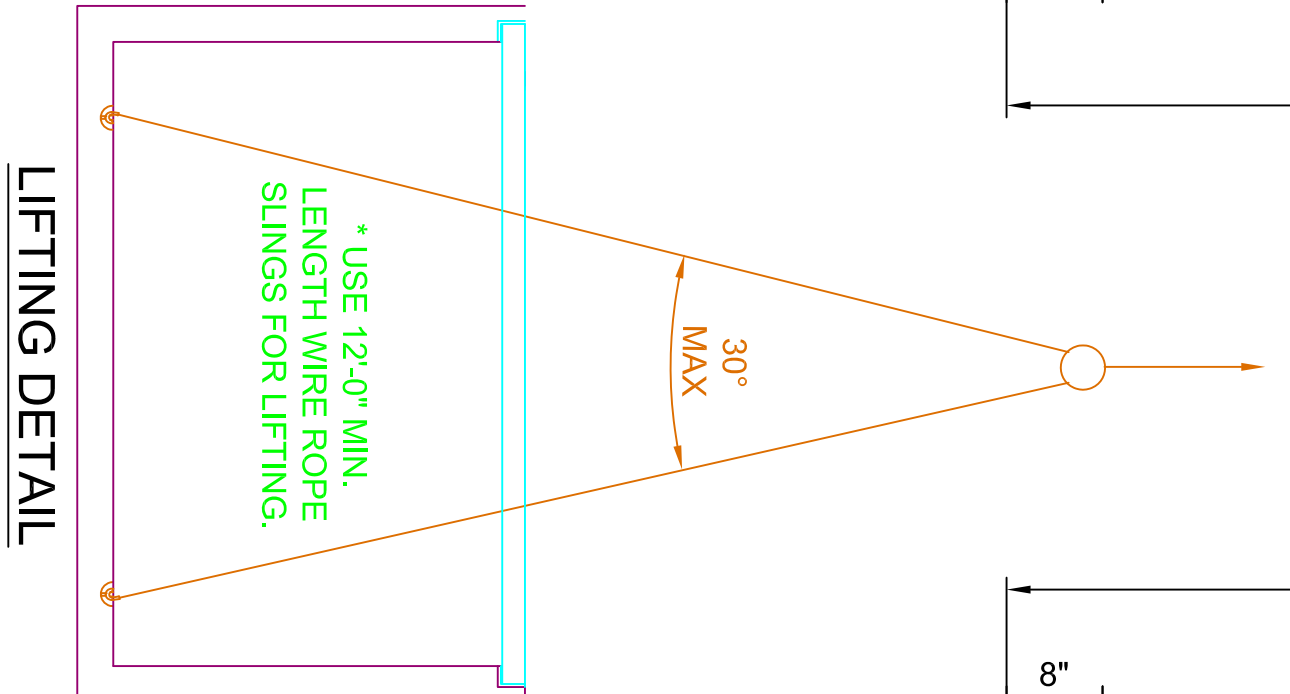
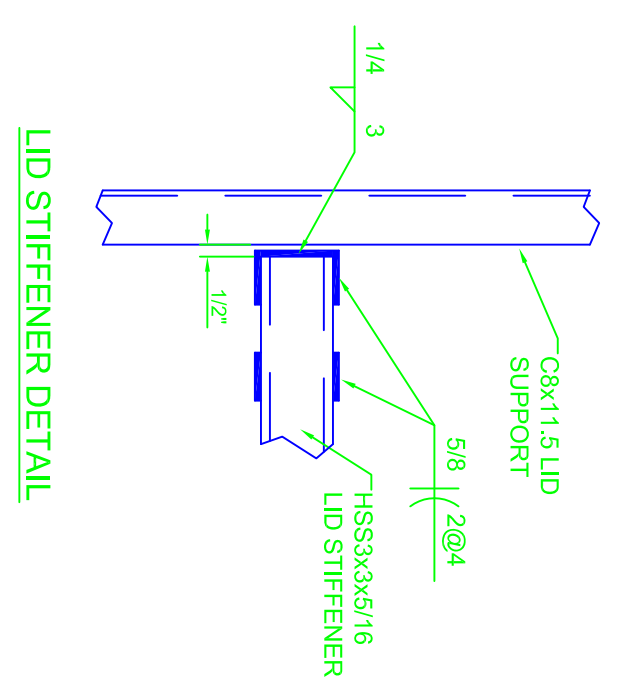


PLAN VIEW - LID
 HS20 HIGHWAY LOAD
 HOT DIPPED GALVANIZED

LID MATERIALS
 1/2" CHECKER PLATE: ASTM A786 MANUFACTURED TO A36 SPECIFICATION
 HOT ROLLED WIDE FLANGE AND CHANNELS: ASTM A992 GRADE 50



NOTE:
 CONCRETE BASE WEIGHT = 23,100#
 STEEL LID WEIGHT = 1,800#

NO.	DATE	BY	REVISION
Trenwa Inc.			
1419 ALEXANDRIA PIKE FORT THOMAS, KY 41075 859-781-0831			
SCALE: 3/4" = 1'-0" DRAWN BY: bec d. APPROVED BY: KR			
DATE: MARCH 1, 2013 ARCH D-SIZE DRAWING PLOT 1:1			
3-WAY HEAVY DUTY VAULT-STEEL LID FOR S&C ELECTRIC 15.9KV VISTA SWITCHGEAR			
DRAWING NUMBER			3WHDD15-S