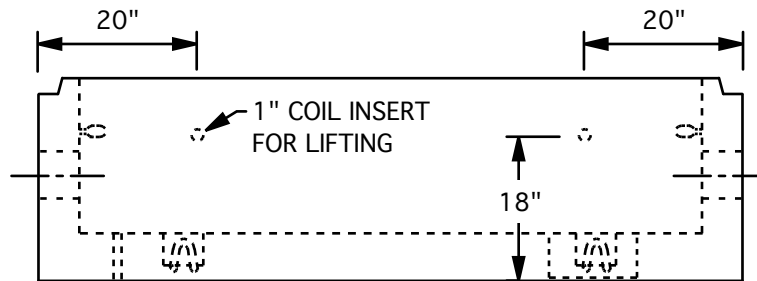
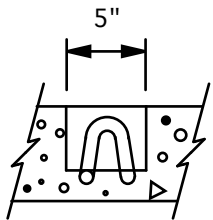


PLAN



ELEVATION

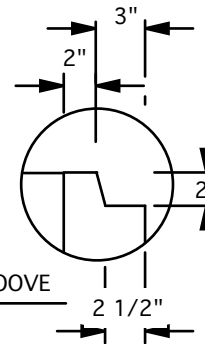


PULLING IN IRON

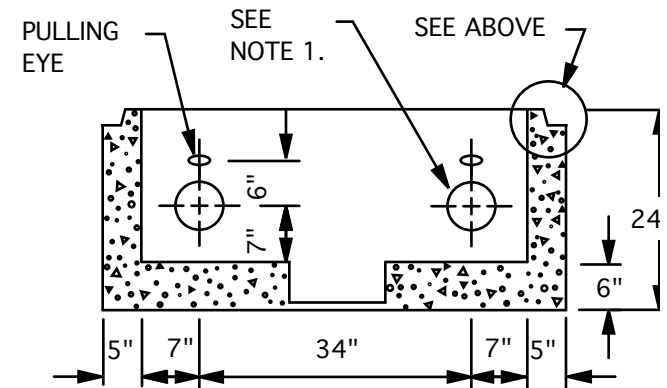
CONCRETE PULL/SPLICE BOX
 (78" x 48" INSIDE DIMENSION)
 HS20 TRAFFIC RATED-32.000#/AXLE
 FITS 320180 OR 320182 TOP
 WEIGHT=5000 lbs.

NOTES:

1. INSTALL TWO (2) 6" WIDE FLARE BELLED END ADAPTERS TO ACCEPT 6" SCHEDULE 40 PVC AS SHOWN AT EACH END. INSTALL REMOVABLE PLU IN EACH ADAPTER PRIOR TO SHIPMENT.
2. SURFACE AREAS TO BE FREE OF SHARP EDGES AND EXCESS CONCRETE.
3. PULLING EYE TO BE 3/4" COIL ROD WITH EYE NUT AND COIL NUT. INSTALLED JUST ABOVE EACH ADAPTER OPENING.
4. PART NUMBER AND WEIGHT WILL BE STENCILED OR EMBOSSED.



SHIPLAP GROOVE



SECTION A-A

TRENWA INC.		
1419 ALEXANDRIA PIKE	FORT THOMAS, KY. 41075	859-781-0
CONCRETE PULL/SPLICE BOX	DATE 10/9/07	DRAWING N 320181