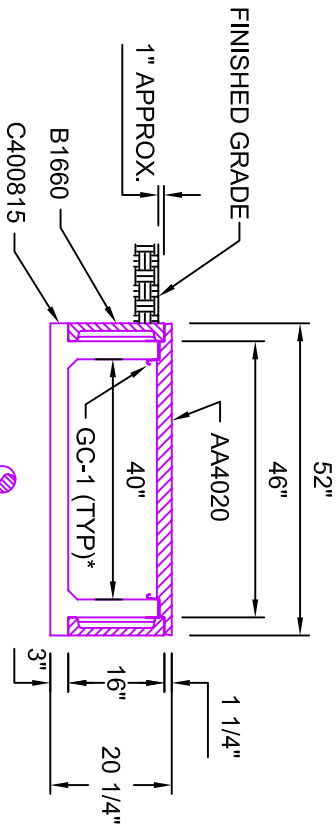


**AA4020**



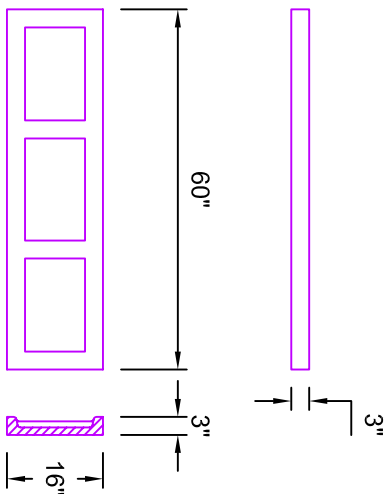
INSTALL SIDEWALLS  
RIB TYPE: RECESS  
SIDES FACING IN.

INSTALL TRENCH USING TRENWA INSTALLATION SPECIFICATIONS PROCEDURE

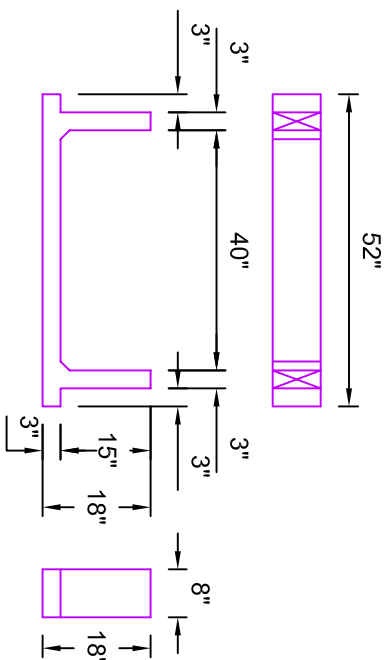
**TYPICAL SECTION 40" WIDE 16" DEEP**

IF TRENCH IS BEING INSTALLED IN POOR  
DRAINAGE SOIL, A PERFORATED DRAIN  
IS RECOMMENDED.

\*GC1 (GROUND CLIPS) OPTIONAL



**B1660**



**C400815**

**Trenwa Inc.**

1419 ALEXANDRIA PIKE FORT THOMAS, KY 41075 859-781-0831

**TYPICAL COMPONENT PEDESTRIAN BRACKET,  
LID & SECTION FOR 40" WIDE 16" DEEP**

Date:  
10/31/05

Dwg. No.  
COMPONENT 4016

Scale:  
3/8" = 1'-0"