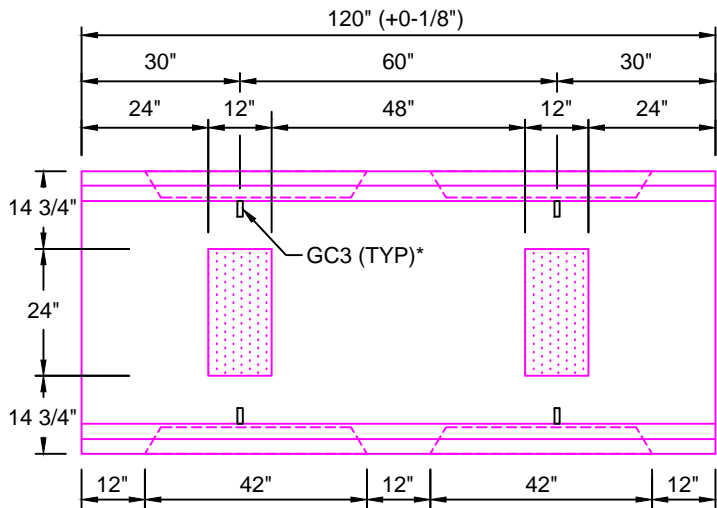
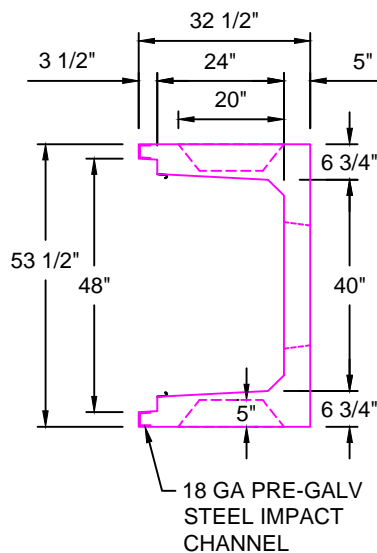


**TYPICAL LIGHT TRAFFIC SECTION
WITH CONCRETE LID 40"W x 24"D**

SCALE: 1"=1'-0"



BL4024-120
SCALE: 1/2" = 1'-0"
WEIGHT: 5714 #



**H10 DESIGN
(16,000 LBS / AXLE)**

*GC3 (GROUND CLIPS) OPTIONAL

Trenwa Inc.	
1419 ALEXANDRIA PIKE FORT THOMAS, KY 41075 859-781-0831	
TYPICAL LIGHT TRAFFIC BASE, CONCRETE LID & SECTION FOR 40" WIDE x 24" DEEP TRENCH	
Date: 10/20/17	Dwg. No. BL4024-120