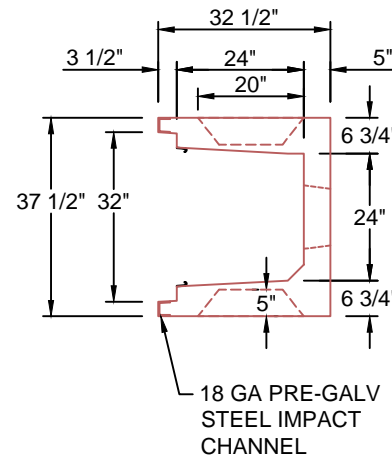
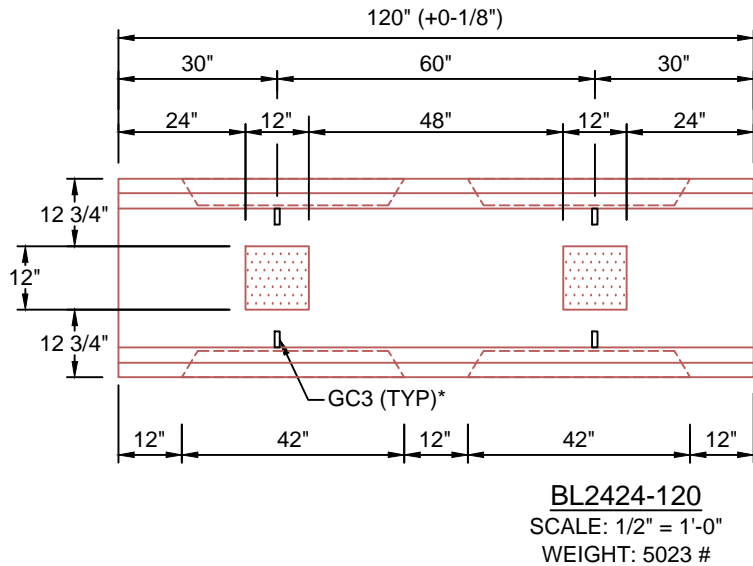


**TYPICAL LIGHT TRAFFIC SECTION WITH CONCRETE LID 24"W x 24"D**  
SCALE: 1" = 1'-0"



**H10 DESIGN**  
**(16,000 LBS / AXLE)**

\*GC3 (GROUND CLIPS) OPTIONAL

<b>Trenwa Inc.</b>	
1419 ALEXANDRIA PIKE FORT THOMAS, KY 41075 859-781-0831	
<b>TYPICAL LIGHT TRAFFIC BASE, CONCRETE LID &amp; SECTION FOR 24" WIDE x 24" DEEP TRENCH</b>	
Date: 10/19/17	Dwg. No. BL2424-120