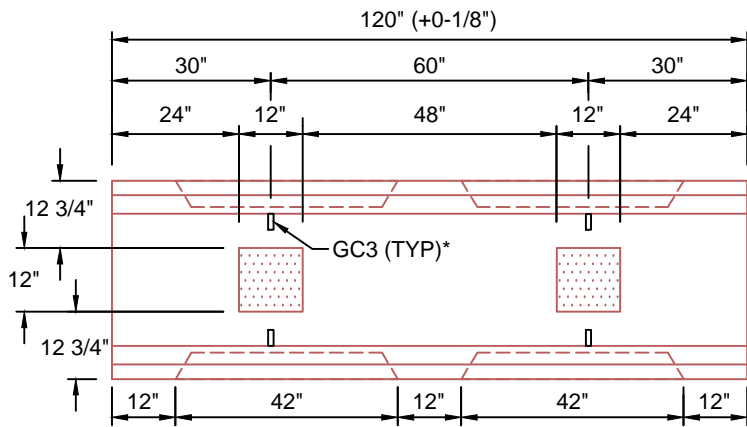
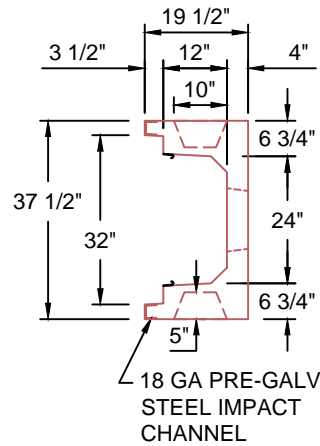


**TYPICAL LIGHT TRAFFIC SECTION  
WITH STEEL LID 24"W x 12"D**  
SCALE: 1" = 1'-0"



**BL2412-120**  
SCALE: 1/2" = 1'-0"  
WEIGHT: 3080#



**H10 DESIGN  
(16,000 LBS / AXLE)**

<b>Trenwa Inc.</b>		
1419 ALEXANDRIA PIKE FORT THOMAS, KY 41075 859-781-0831		
<b>TYPICAL LIGHT TRAFFIC BASE, STEEL LID &amp; SECTION FOR 24" WIDE x 12" DEEP TRENCH</b>		
Date:	Dwg. No.	
7/10/2017	BL2412-120	