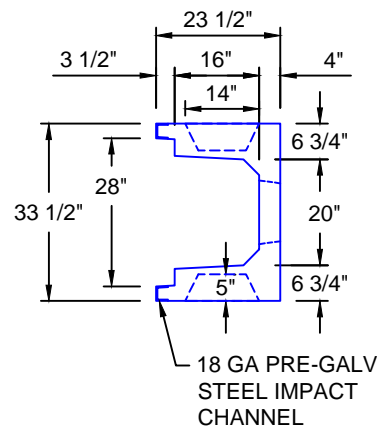
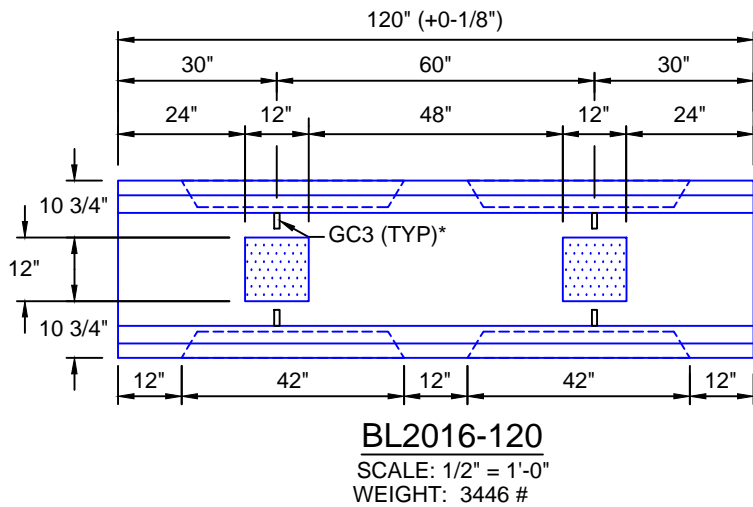


TYPICAL LIGHT TRAFFIC SECTION WITH STEEL LID 20"W x 16"D
SCALE: 1"=1'-0"



*GC3 (GROUND CLIPS) OPTIONAL

Trenwa Inc.		
1419 ALEXANDRIA PIKE FORT THOMAS, KY 41075 859-781-0831		
TYPICAL LIGHT TRAFFIC BASE, STEEL LID & SECTION FOR 20" WIDE x 16" DEEP TRENCH		
Date:	Dwg. No.	
9/22/2017	BL2016-120	