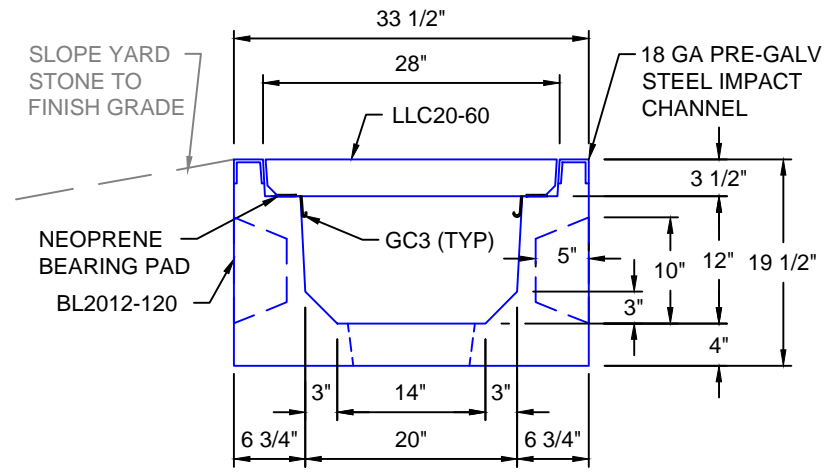
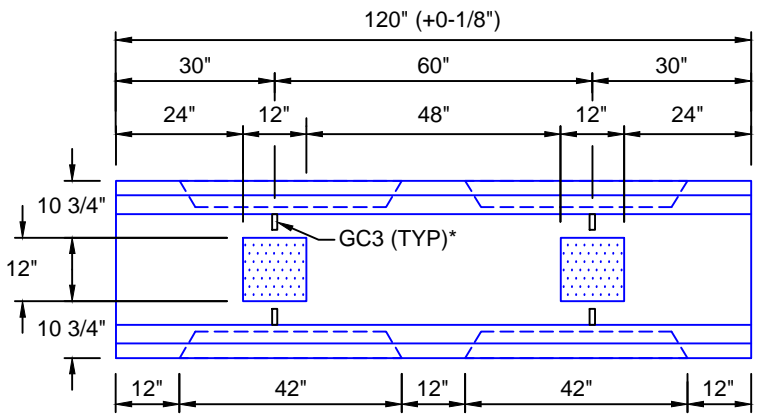


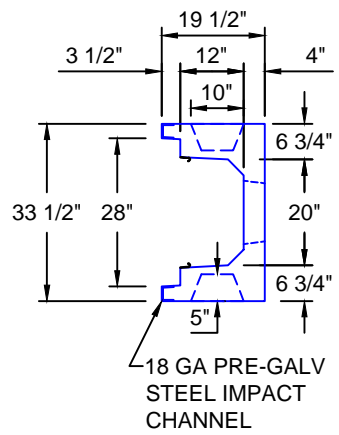
FX-16 (1/2") NC LIFTING INSERT AND MX-28 CAP  
 BROOM FINISH AND EDGE  
**LLC20-60**  
 SCALE: 1/2" = 1'-0"  
 WEIGHT: 480 #



**TYPICAL LIGHT TRAFFIC SECTION WITH CONCRETE LID 20"W x 12"D**  
 SCALE: 1" = 1'-0"



**BL2012-120**  
 SCALE: 1/2" = 1'-0"  
 WEIGHT: 2918 #



18 GA PRE-GALV STEEL IMPACT CHANNEL

**H10 DESIGN**  
**(16,000 LBS / AXLE)**

<b>Trenwa Inc.</b>	
1419 ALEXANDRIA PIKE FORT THOMAS, KY 41075 859-781-0831	
<b>TYPICAL LIGHT TRAFFIC BASE, CONCRETE LID &amp; SECTION FOR 20" WIDE x 12" DEEP TRENCH</b>	
Date: 10/16/2017	Dwg. No. BL2012-120