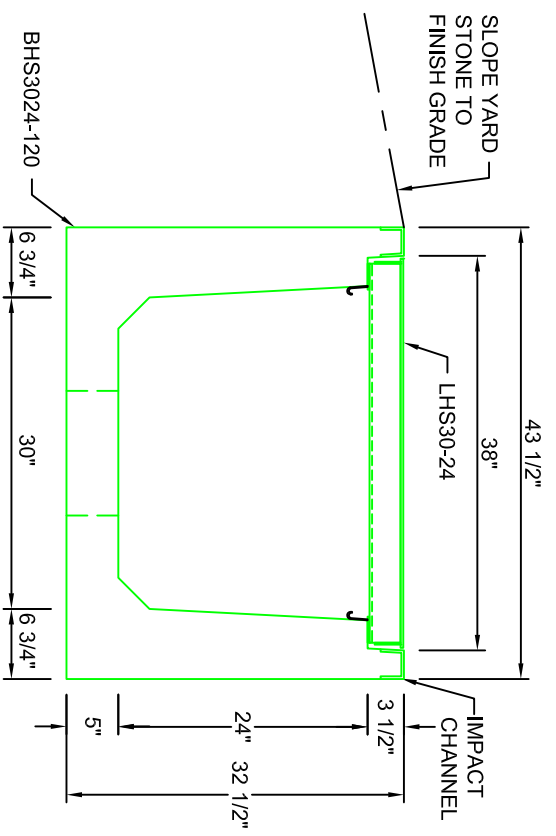
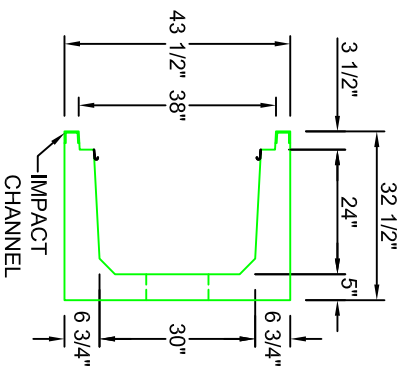
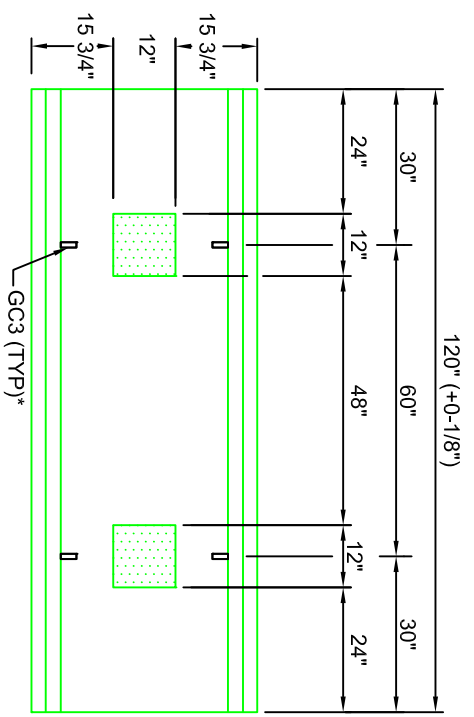


LHS30-24
SCALE: 3/4"=1'-0"
WEIGHT: 145#



TYPICAL ROAD CROSSING
SECTION WITH STEEL LID
30"W x 24"D
SCALE: 1"=1'-0"

AASHTO HS20 DESIGN
(32,000 LBS / AXLE)

Trenwa Inc.

1419 ALEXANDRIA PIKE FORT THOMAS, KY 41075 859-781-0831

TYPICAL ROAD CROSSING BASE, STEEL LID &
SECTION FOR 30" WIDE x 24" DEEP TRENCH

Date: 3/13/17 Dwg. No. BHS3024-120

*GC3 (GROUND CLIPS) OPTIONAL

BHS3024-120

SCALE: 1/2" = 1'-0"
WEIGHT: 5584 #