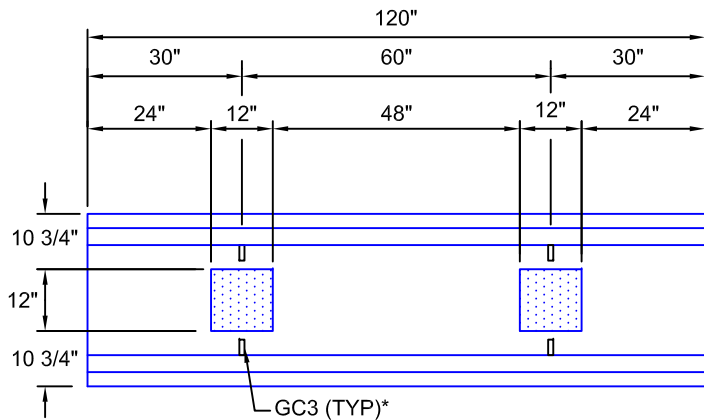
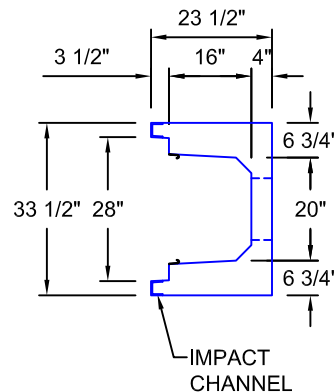


TYPICAL ROAD CROSSING SECTION WITH STEEL LID
20"W x 16"D
SCALE: 1"=1'-0"



BHS2016-120
SCALE: 1/2" = 1'-0"
WEIGHT: 3703 #



AASHTO HS20 DESIGN
(32,000 LBS / AXLE)

Trenwa Inc.

1419 ALEXANDRIA PIKE FORT THOMAS, KY 41075 859-781-0831

TYPICAL ROAD CROSSING BASE, STEEL LID & SECTION FOR 20" WIDE x 16" DEEP TRENCH

Date:
1/27/17

Dwg. No.
BHS2016-120

*GC3 (GROUND CLIPS) OPTIONAL