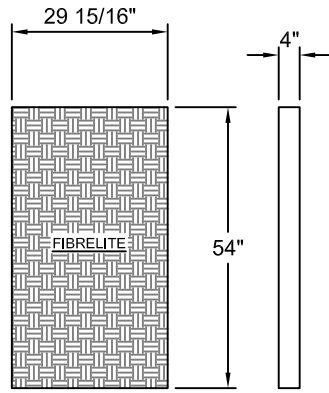


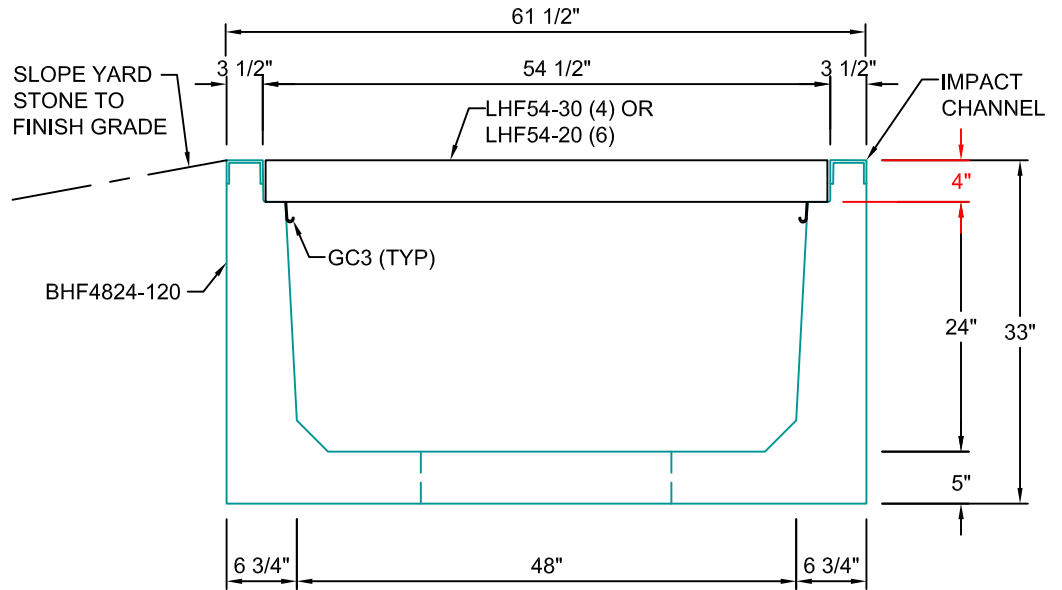
LHF54-20

SCALE: 1/2" = 1'-0"
WEIGHT: 90#



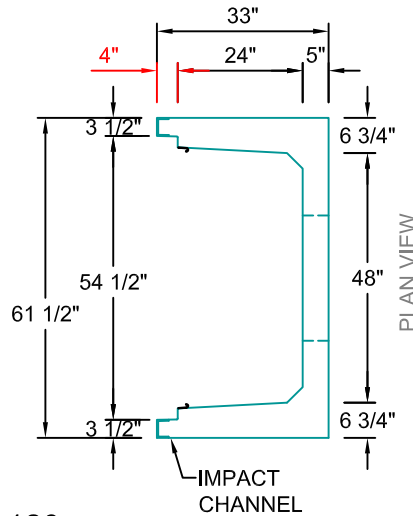
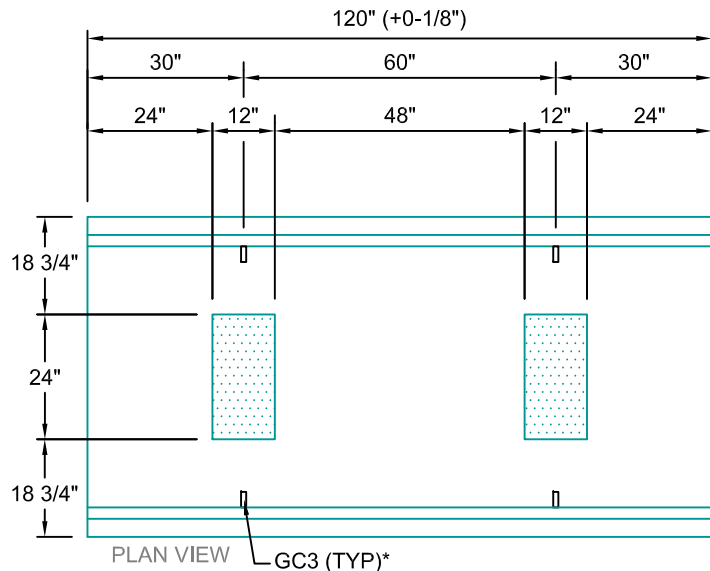
LHF54-30

SCALE: 1/2" = 1'-0"
WEIGHT: 108#



TYPICAL ROAD CROSSING SECTION WITH FIBRELITE LID

48"W x 24"D
SCALE: 1"=1'-0"



BHF4824-120

SCALE: 1/2" = 1'-0"
WEIGHT: 6406#

*GC3 (GROUND CLIPS) OPTIONAL

AASHTO HS20 DESIGN
(32,000 LBS / AXLE)

Trenwa Inc.

1419 ALEXANDRIA PIKE FORT THOMAS, KY 41075 859-781-0831

TYPICAL ROAD CROSSING BASE, FIBRELITE LID & SECTION FOR 48" WIDE x 24" DEEP TRENCH

Date:
1/27/17

Dwg. No.
BHF4824-120