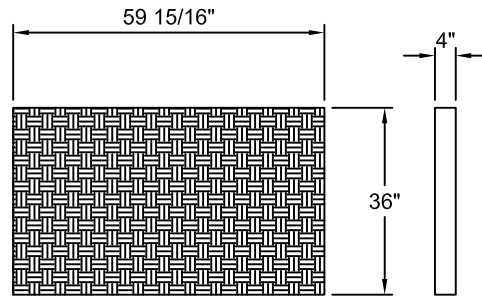
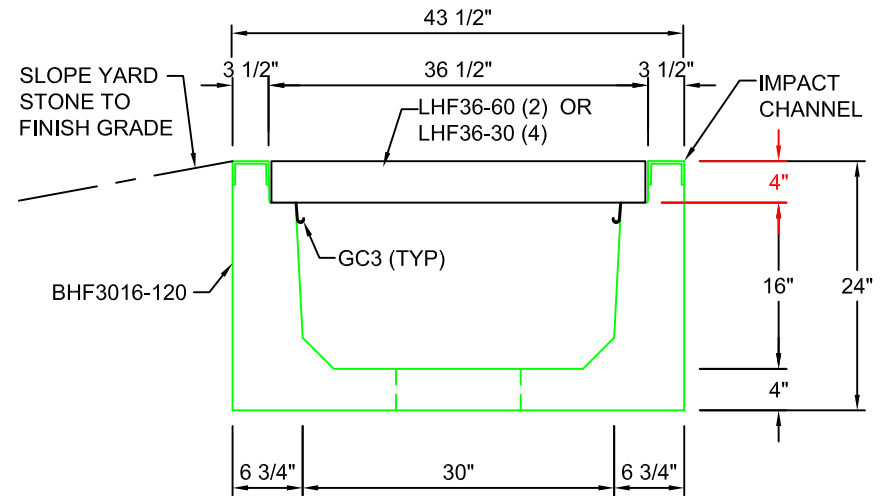


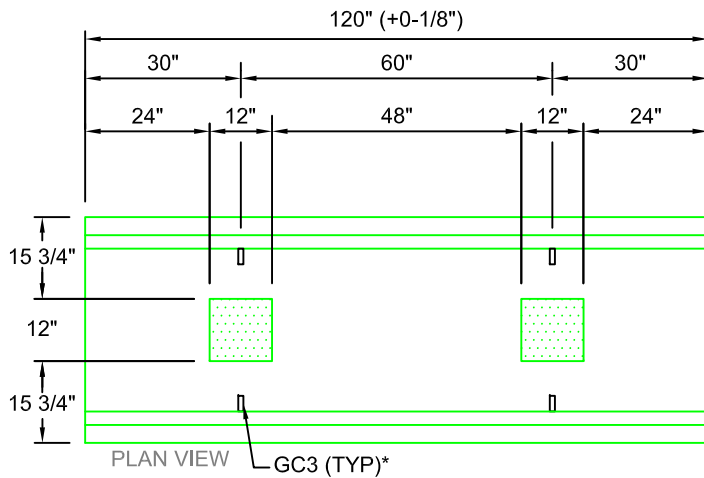
LHF36-30
 SCALE: 1/2" = 1'-0"
 WEIGHT: 50#



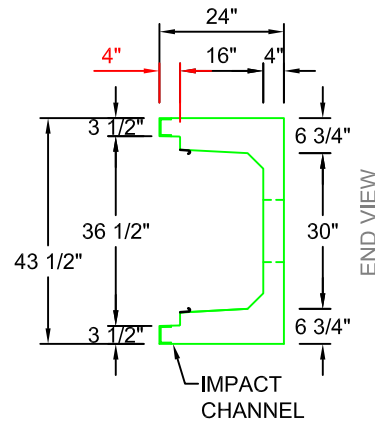
LHF36-60
 SCALE: 1/2" = 1'-0"
 WEIGHT: 90#



TYPICAL ROAD CROSSING SECTION WITH FIBRELITE LID
30"W x 16"D
 SCALE: 1"=1'-0"



BHF3016-120
 SCALE: 1/2" = 1'-0"
 WEIGHT: 4154#



AASHTO HS20 DESIGN
(32,000 LBS / AXLE)

Trenwa Inc.

1419 ALEXANDRIA PIKE FORT THOMAS, KY 41075 859-781-0831

TYPICAL ROAD CROSSING BASE, FIBRELITE LID & SECTION FOR 30" WIDE x 16" DEEP TRENCH

Date:
1/30/17

Dwg. No.
BHF3016-120

*GC3 (GROUND CLIPS) OPTIONAL