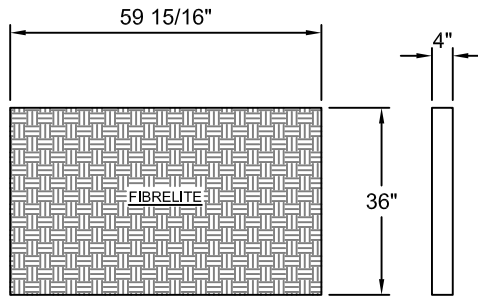
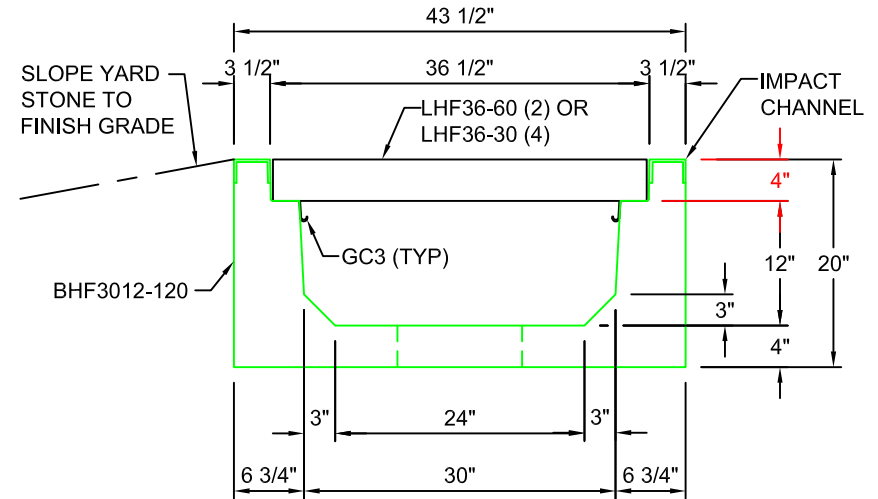


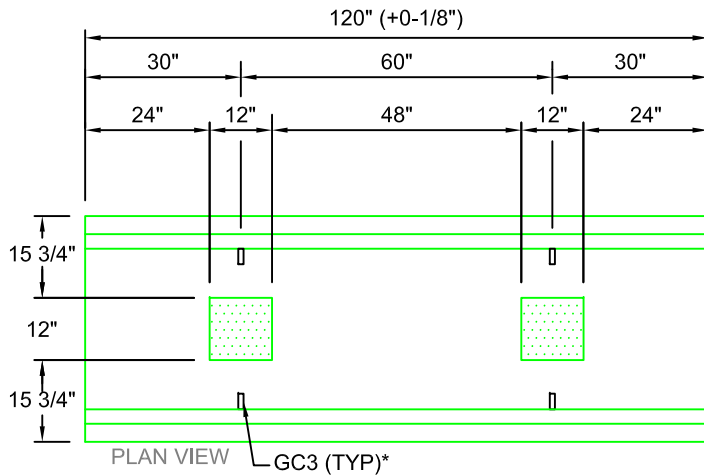
**LHF36-30**  
SCALE: 1/2" = 1'-0"  
WEIGHT: 50 #



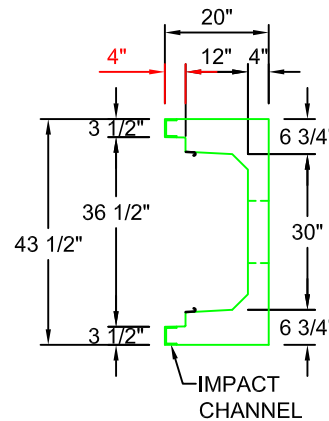
**LHF36-60**  
SCALE: 1/2" = 1'-0"  
WEIGHT: 90 #



**TYPICAL ROAD CROSSING SECTION WITH FIBRELITE LID**  
**30"W x 12"D**  
SCALE: 1"=1'-0"



**BHF3012-120**  
SCALE: 1/2" = 1'-0"  
WEIGHT: 3633#



**AASHTO HS20 DESIGN**  
**(32,000 LBS / AXLE)**

**Trenwa Inc.**

1419 ALEXANDRIA PIKE FORT THOMAS, KY 41075 859-781-0831

**TYPICAL ROAD CROSSING BASE, FIBRELITE LID & SECTION FOR 30" WIDE x 12" DEEP TRENCH**

Date:  
1/26/17

Dwg. No.  
BHF3012-120

\*GC3 (GROUND CLIPS) OPTIONAL