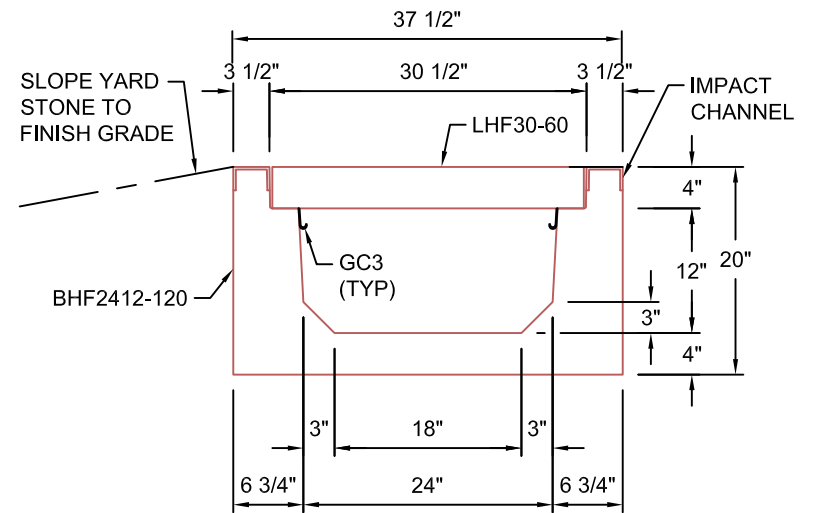
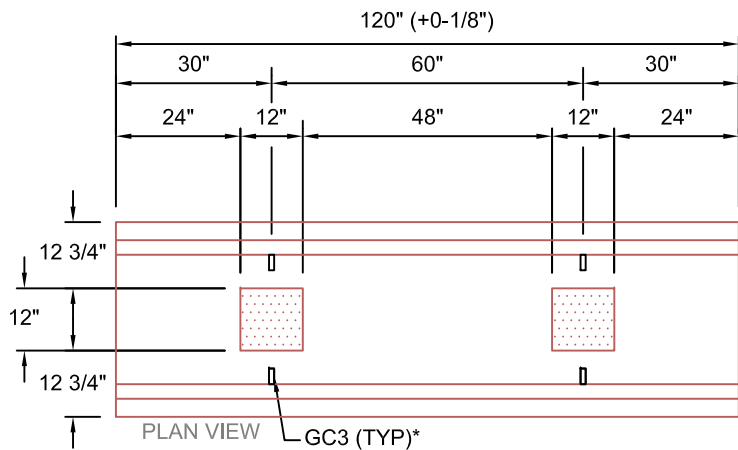


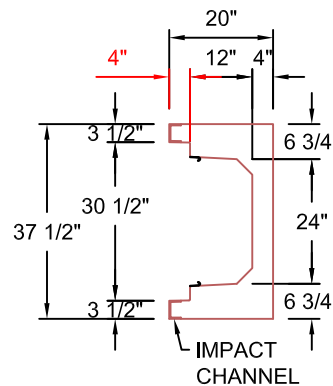
LHF30-60
 SCALE: 1/2" = 1'-0"
 WEIGHT: 77 #



TYPICAL ROAD CROSSING SECTION WITH FIBRELITE LID
 24"W x 12"D
 SCALE: 1" = 1'-0"



BHF2412-120
 SCALE: 1/2" = 1'-0"
 WEIGHT: 3389 #



END VIEW

AASHTO HS20 DESIGN
(32,000 LBS / AXLE)

*GC3 (GROUND CLIPS) OPTIONAL

Trenwa Inc.	
1419 ALEXANDRIA PIKE FORT THOMAS, KY 41075 859-781-0831	
TYPICAL ROAD CROSSING BASE, FIBRELITE LID & SECTION FOR 24" WIDE x 12" DEEP TRENCH	
Date: 1/23/2017	Dwg. No. BHF2412-120