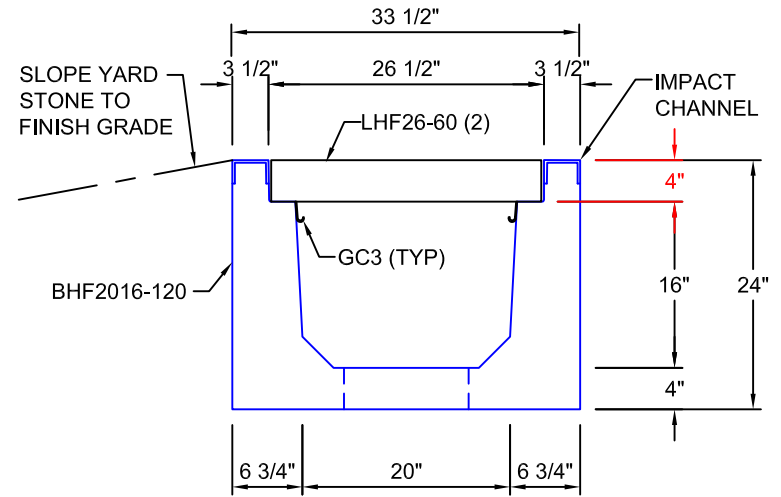
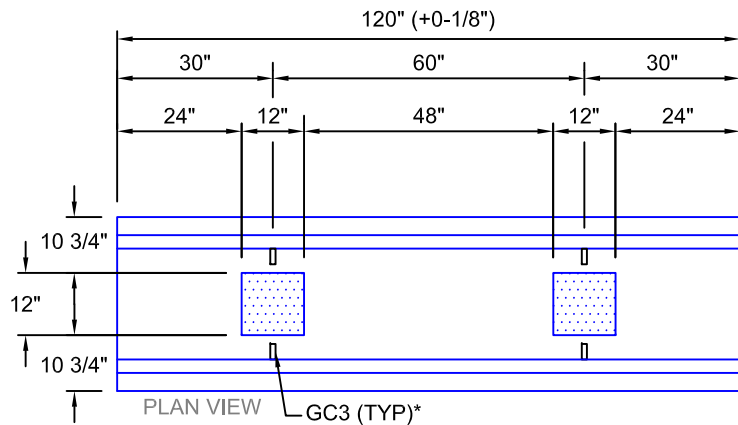


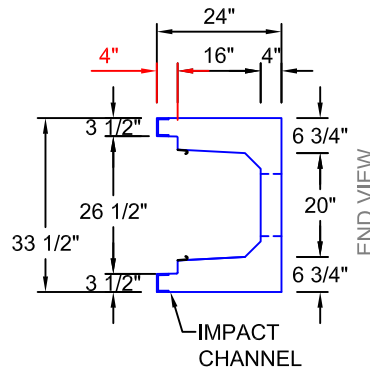
LHF26-60
 SCALE: 1/2" = 1'-0"
 WEIGHT: 68#



TYPICAL ROAD CROSSING SECTION WITH FIBRELITE LID
20"W x 16"D
 SCALE: 1"=1'-0"



BHF2016-120
 SCALE: 1/2" = 1'-0"
 WEIGHT: 3747#



AASHTO HS20 DESIGN
(32,000 LBS / AXLE)

*GC3 (GROUND CLIPS) OPTIONAL

Trenwa Inc.		
1419 ALEXANDRIA PIKE FORT THOMAS, KY 41075 859-781-0831		
TYPICAL ROAD CROSSING BASE, FIBRELITE LID & SECTION FOR 20" WIDE x 16" DEEP TRENCH		
Date:	Dwg. No.	
1/30/17	BHF2016-120	