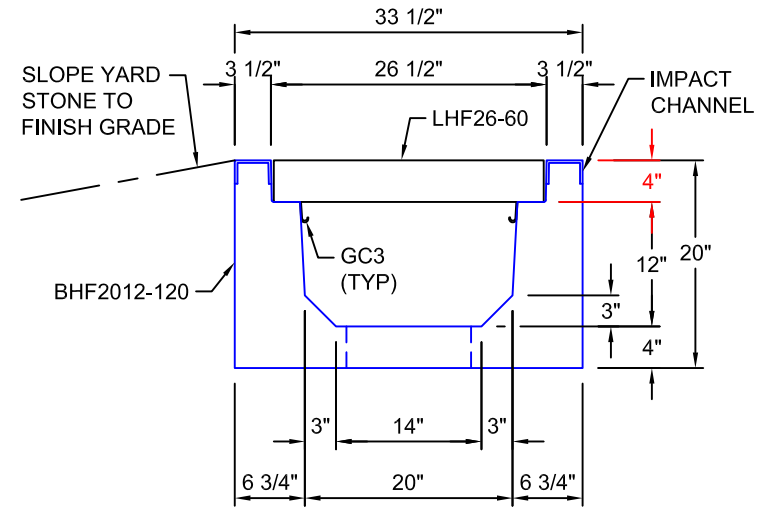
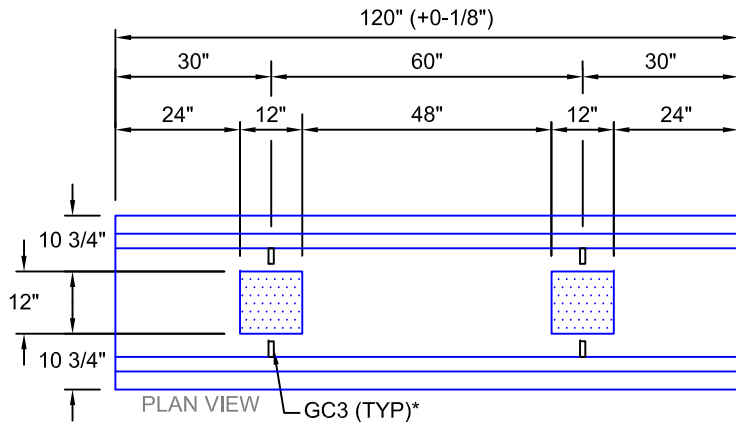


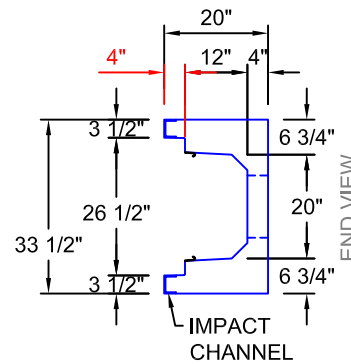
**LHF26-60**  
 SCALE: 1/2" = 1'-0"  
 WEIGHT: 68 #



**TYPICAL ROAD CROSSING SECTION WITH FIBRELITE LID**  
**20"W x 12"D**  
 SCALE: 1" = 1'-0"



**BHF2012-120**  
 SCALE: 1/2" = 1'-0"  
 WEIGHT: 3226 #



**AASHTO HS20 DESIGN**  
**(32,000 LBS / AXLE)**

**Trenwa Inc.**

1419 ALEXANDRIA PIKE FORT THOMAS, KY 41075 859-781-0831

TYPICAL ROAD CROSSING BASE, FIBRELITE LID & SECTION FOR 20" WIDE x 12" DEEP TRENCH

Date:  
1/23/2017

Dwg. No.  
BHF2012-120

\*GC3 (GROUND CLIPS) OPTIONAL