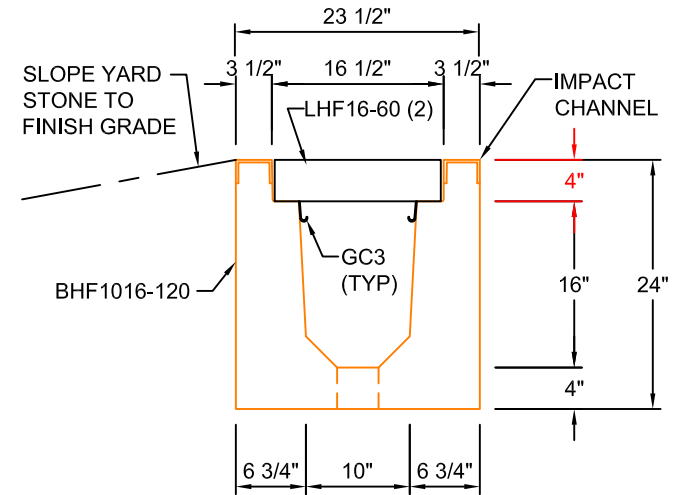
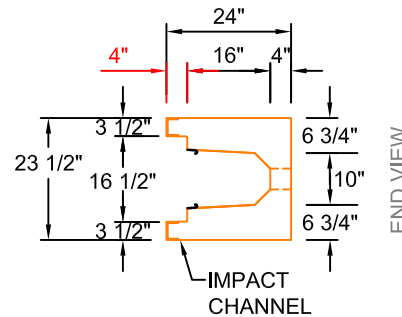
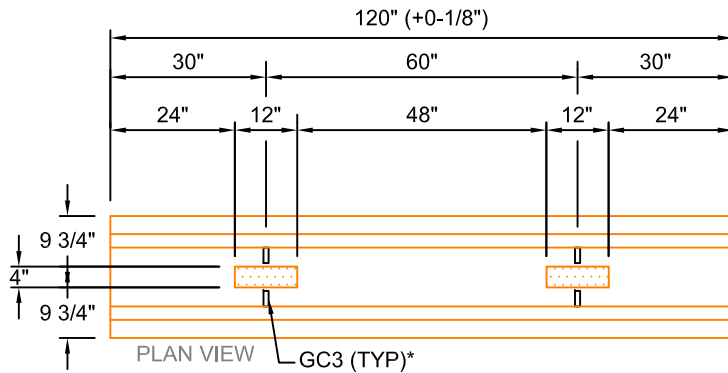


LHF16-60
 SCALE: 1/2" = 1'-0"
 WEIGHT: 44#



TYPICAL ROAD CROSSING SECTION WITH FIBRELITE LID
10"W x 16"D
 SCALE: 1"=1'-0"



BHF1016-120
 SCALE: 1/2" = 1'-0"
 WEIGHT: 3406#

*GC3 (GROUND CLIPS) OPTIONAL

AASHTO HS20 DESIGN
(32,000 LBS / AXLE)

Trenwa Inc.	
1419 ALEXANDRIA PIKE FORT THOMAS, KY 41075 859-781-0831	
TYPICAL ROAD CROSSING BASE, FIBRELITE LID & SECTION FOR 10" WIDE x 16" DEEP TRENCH	
Date: 1/30/17	Dwg. No. BHF1016-120