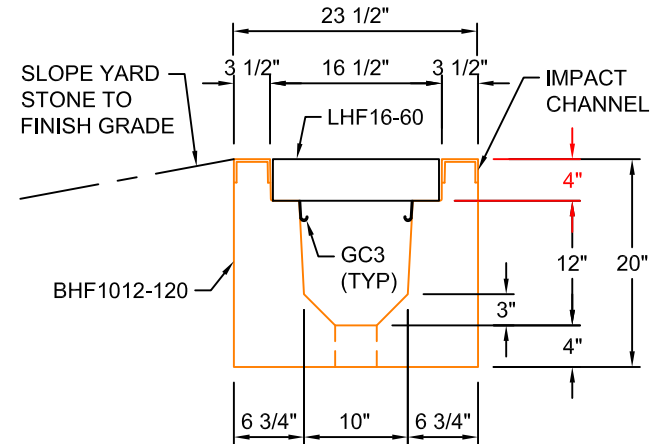
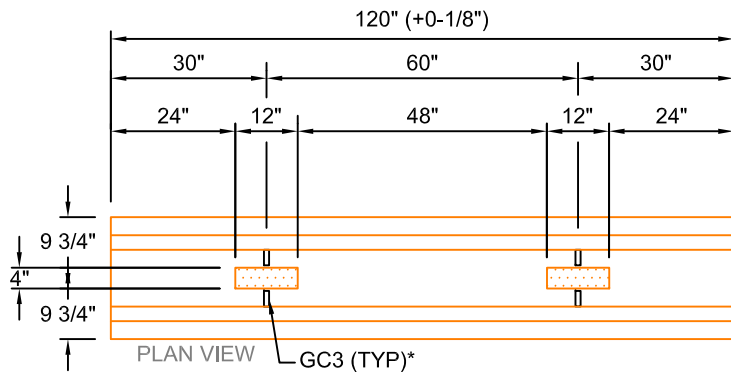


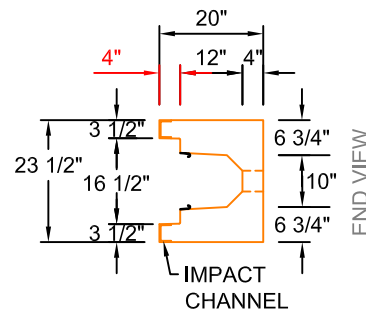
LHF16-60
 SCALE: 1/2" = 1'-0"
 WEIGHT: 44 #



TYPICAL ROAD CROSSING SECTION WITH FIBRELITE LID
 10"W x 12"D
 SCALE: 1" = 1'-0"



BHF1012-120
 SCALE: 1/2" = 1'-0"
 WEIGHT: 2885 #



*GC3 (GROUND CLIPS) OPTIONAL

AASHTO HS20 DESIGN
(32,000 LBS / AXLE)

Trenwa Inc.	
1419 ALEXANDRIA PIKE FORT THOMAS, KY 41075 859-781-0831	
TYPICAL ROAD CROSSING BASE, FIBRELITE LID & SECTION FOR 10" WIDE x 12" DEEP TRENCH	
Date: 1/23/2017	Dwg. No. BHF1012-120