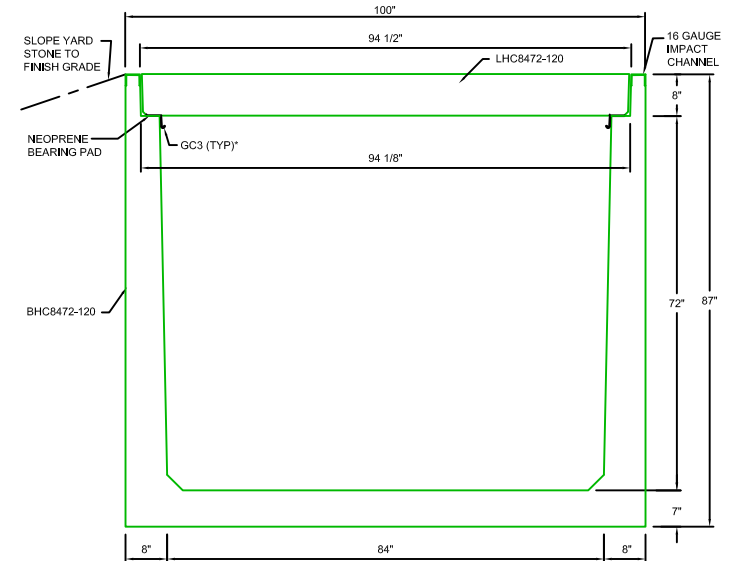
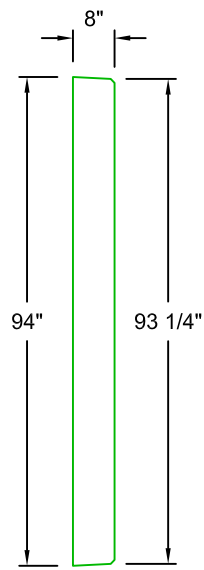
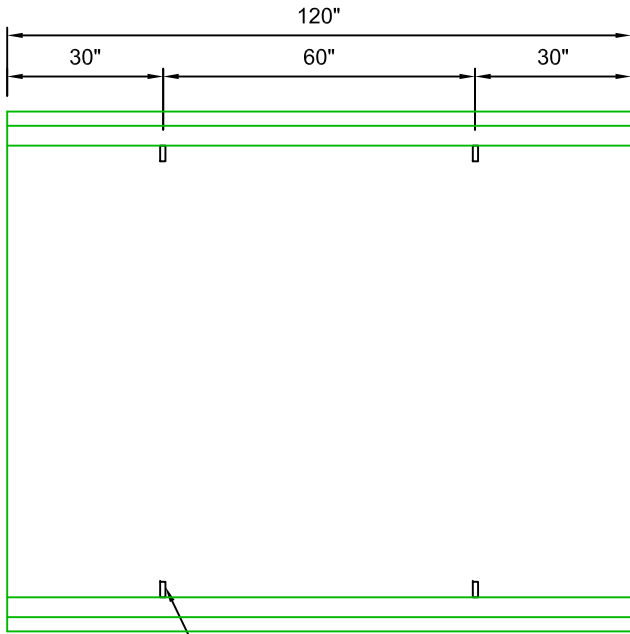


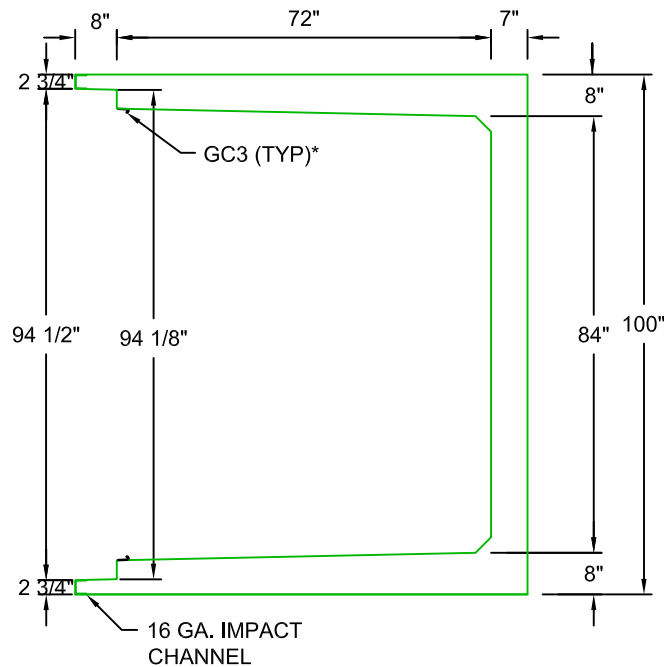
LHC8472-120



TYPICAL XL ROAD CROSSING SECTION 84"W x 72"D



BHC8472-120
SCALE: 1/2"=1'-0"



MANUFACTURED LENGTH IS 1/8" LESS THAN PART NUMBER.
*GC3 (GROUND CLIPS) OPTIONAL

| | | |
|---|-----------------|--|
| Trenwa Inc. | | |
| 1419 ALEXANDRIA PIKE FORT THOMAS, KY 41075 859-781-0831 | | |
| TYPICAL ROAD CROSSING BASE, LID & SECTION FOR 84" WIDE x 72" DEEP TRENCH | | |
| Date: | Dwg. No. | |
| 10/24/2013 | BHC8472-120 STD | |