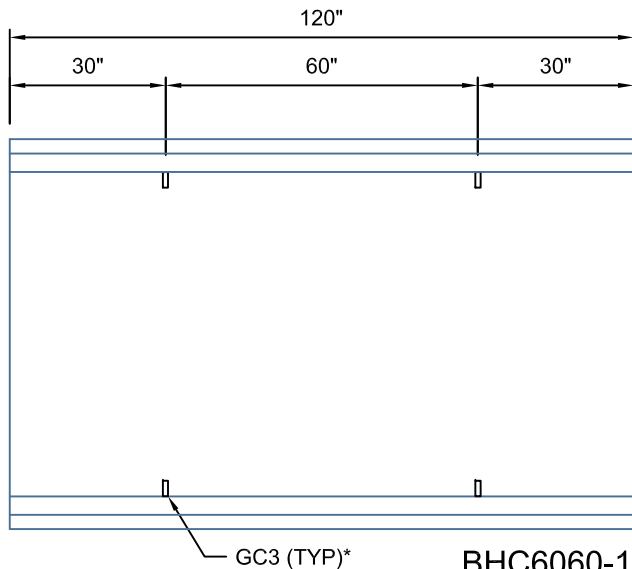
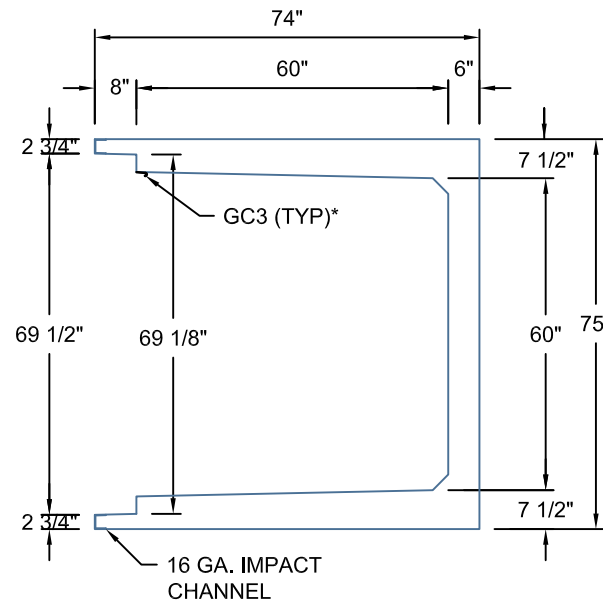


TYPICAL XL ROAD CROSSING
SECTION 60"W x 60"D
 SCALE: 1"=1'-0"



BHC6060-120
 SCALE: 1/2"=1'-0"



AASHTO HS20 DESIGN
(32,000 LBS / AXLE)

Trenwa Inc.

1419 ALEXANDRIA PIKE FORT THOMAS, KY 41075 859-781-0831

TYPICAL ROAD CROSSING BASE, LID & SECTION FOR 60" WIDE x 60" DEEP TRENCH

Date:
10/24/2013

Dwg. No.
BHC6060-120 STD

MANUFACTURED LENGTH IS 1/8" LESS THAN PART NUMBER.

*GC3 (GROUND CLIPS) OPTIONAL