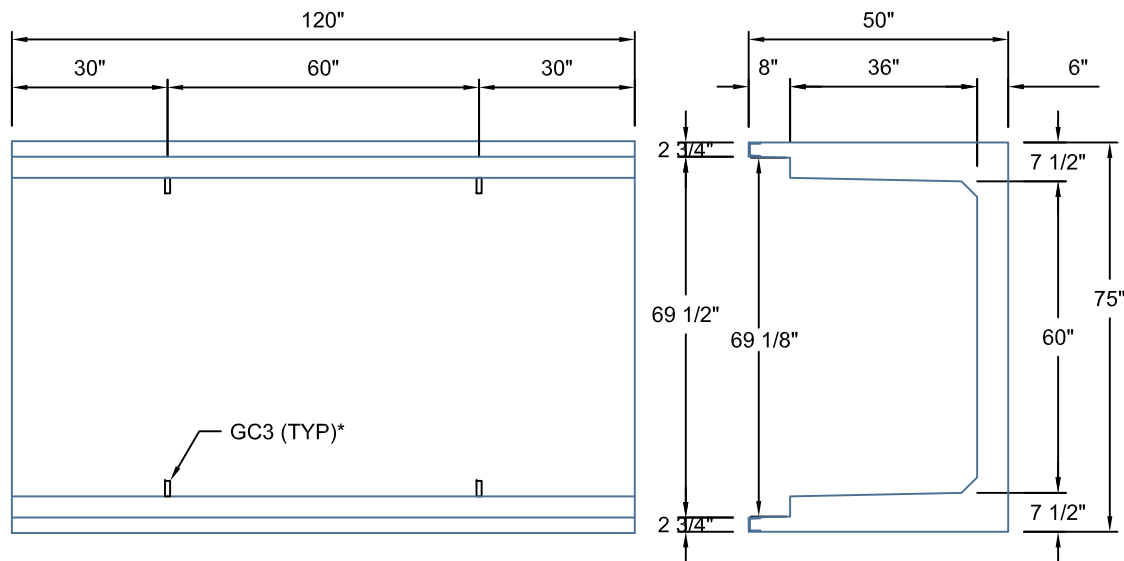


TYPICAL ROAD CROSSING SECTION 60"W x 36"D

SCALE: 1"=1'-0"



BHC6036-120
SCALE: 1/2"=1'-0"

*GC3 (GROUND CLIPS) OPTIONAL

**AASHTO HS20 DESIGN
(32,000 LBS / AXLE)**

Trenwa Inc.

1419 ALEXANDRIA PIKE FORT THOMAS, KY 41075 859-781-0831

**TYPICAL ROAD CROSSING BASE, LID &
SECTION FOR 60" WIDE x 36" DEEP TRENCH**

Date:
8/23/12

Dwg. No.
BHC6036-120