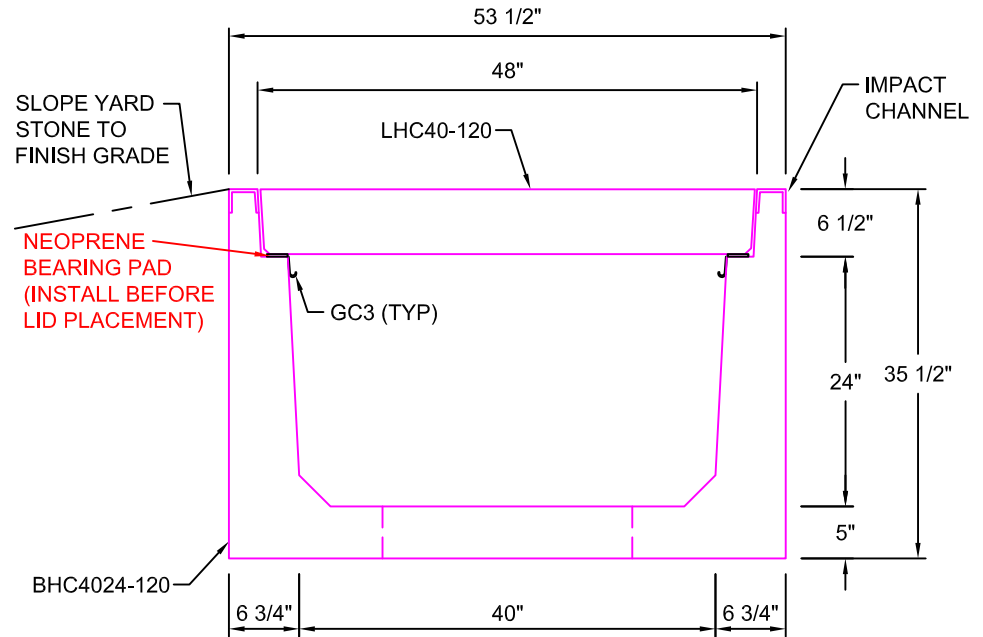
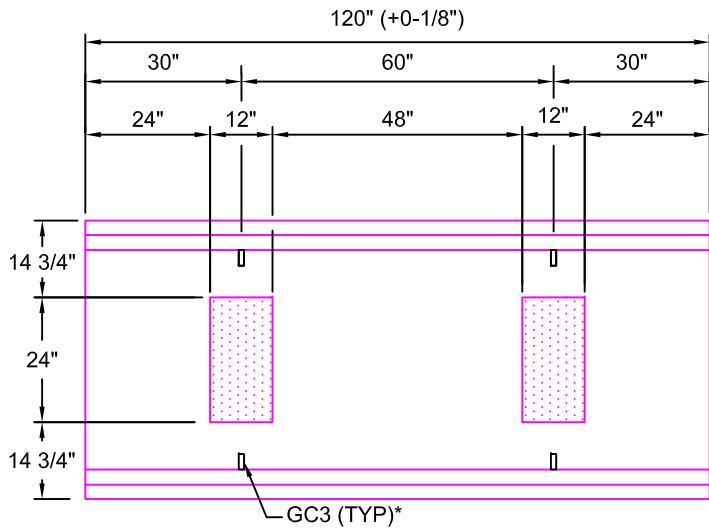


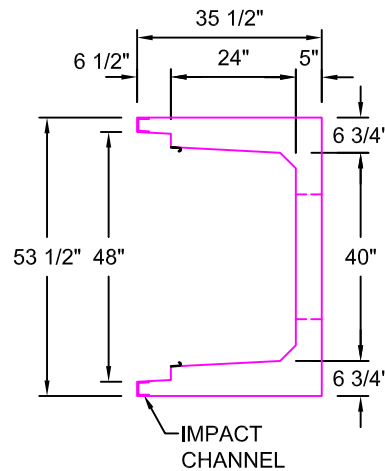
**LHC40-120**  
 SCALE: 1/2"=1'-0"  
 WEIGHT: 3120 #



**TYPICAL ROAD CROSSING**  
**SECTION 40"W x 24"D**  
 SCALE: 1"=1'-0"



**BHC4024-120**  
 SCALE: 1/2" = 1'-0"  
 WEIGHT: 6140 #



\*GC3 (GROUND CLIPS) OPTIONAL

**AASHTO HS20 DESIGN**  
**(32,000 LBS / AXLE)**

<b>Trenwa Inc.</b>	
1419 ALEXANDRIA PIKE FORT THOMAS, KY 41075 859-781-0831	
TYPICAL ROAD CROSSING BASE, LID & SECTION FOR 40" WIDE x 24" DEEP TRENCH	
Date: 3/6/17	Dwg. No. BHC4024-120