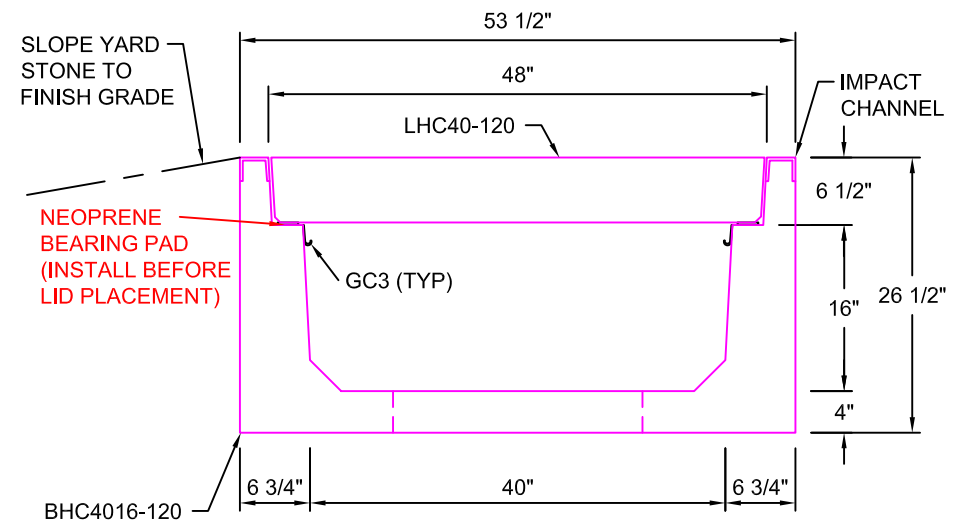
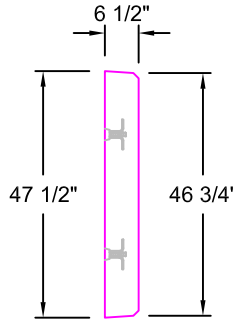
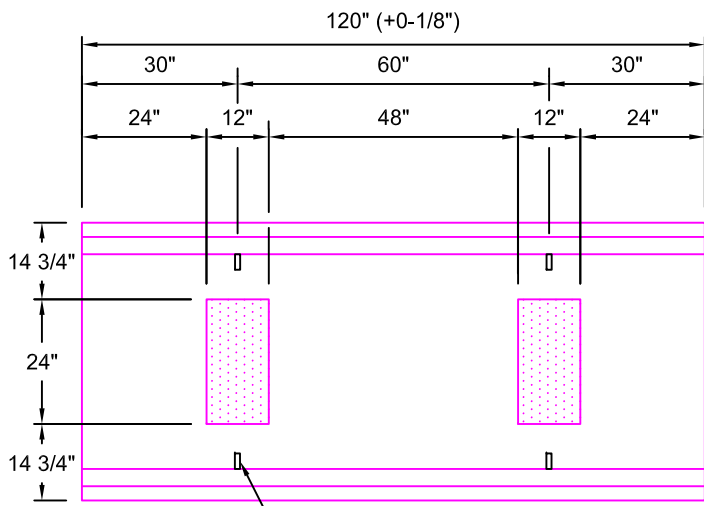


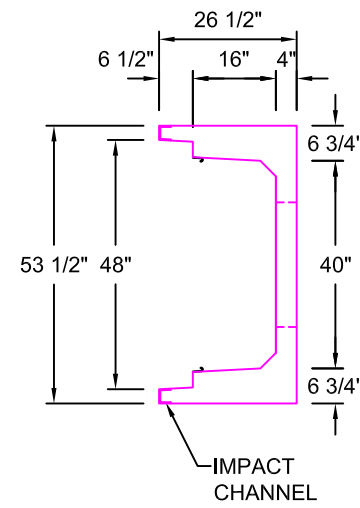
**LHC40-120**  
 SCALE: 1/2"=1'-0"  
 WEIGHT: 3120 #



**TYPICAL ROAD CROSSING**  
**SECTION 40"W x 16"D**  
 SCALE: 1"=1'-0"



**BHC4016-120**  
 SCALE: 1/2" = 1'-0"  
 WEIGHT: 4588 #



**AASHTO HS20 DESIGN**  
**(32,000 LBS / AXLE)**

\*GC3 (GROUND CLIPS) OPTIONAL

<b>Trenwa Inc.</b>		
1419 ALEXANDRIA PIKE FORT THOMAS, KY 41075 859-781-0831		
<b>TYPICAL ROAD CROSSING BASE, LID &amp; SECTION FOR 40" WIDE x 16" DEEP TRENCH</b>		
Date:	Dwg. No.	
5/5/16	BHC4016-120	