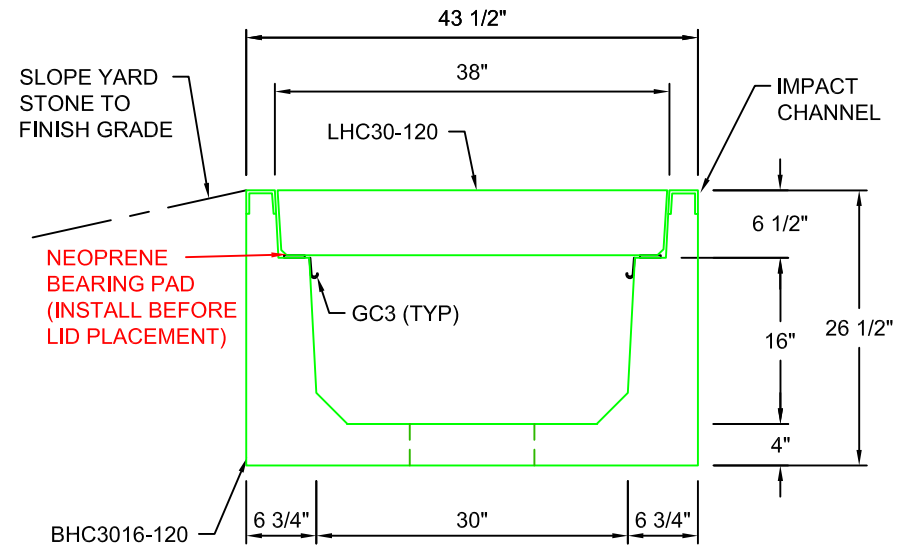
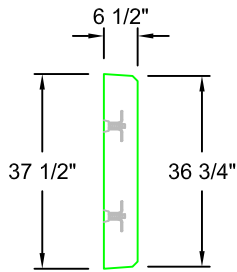


LHC30-120

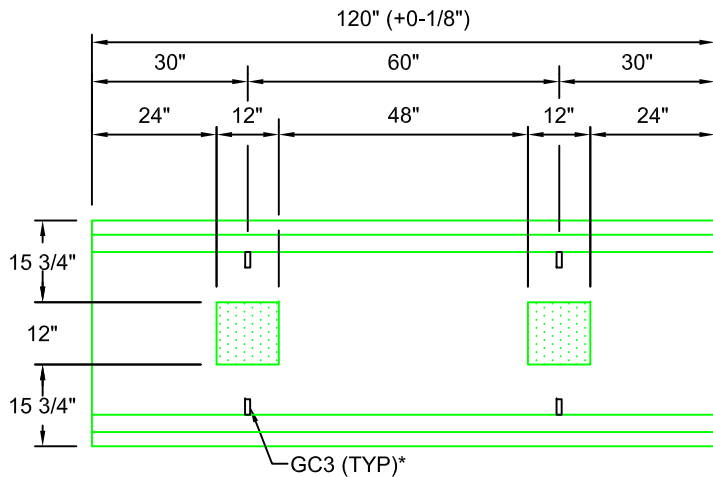
SCALE: 1/2" = 1'-0"

WEIGHT: 2444 #



**TYPICAL ROAD CROSSING
SECTION 30"W x 16"D**

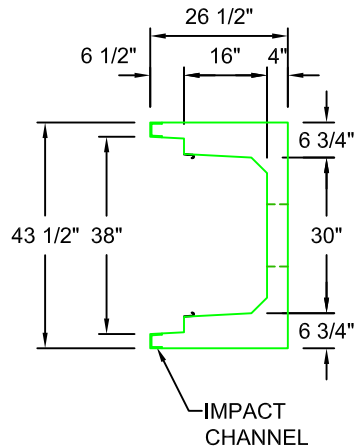
SCALE: 1"=1'-0"



BHC3016-120

SCALE: 1/2" = 1'-0"

WEIGHT: 4279 #



**AASHTO HS20 DESIGN
(32,000 LBS / AXLE)**

Trenwa Inc.

1419 ALEXANDRIA PIKE FORT THOMAS, KY 41075 859-781-0831

**TYPICAL ROAD CROSSING BASE, LID &
SECTION FOR 30" WIDE x 16" DEEP TRENCH**

Date:
5/6/16

Dwg. No.
BHC3016-120

*GC3 (GROUND CLIPS) OPTIONAL