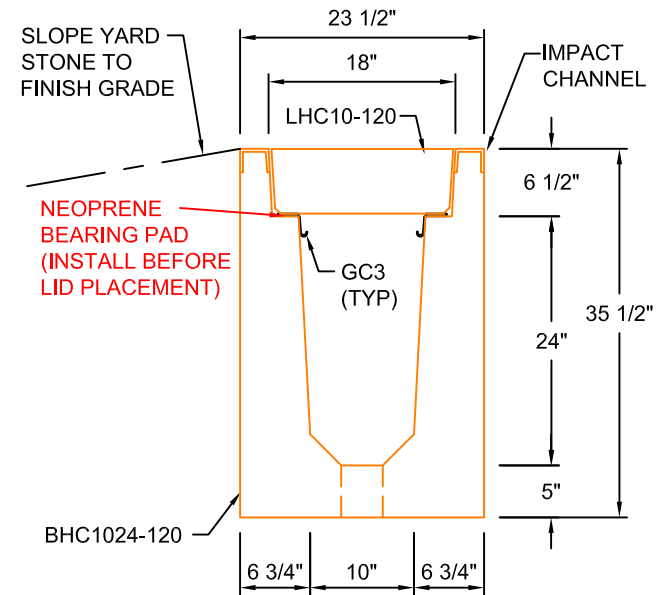
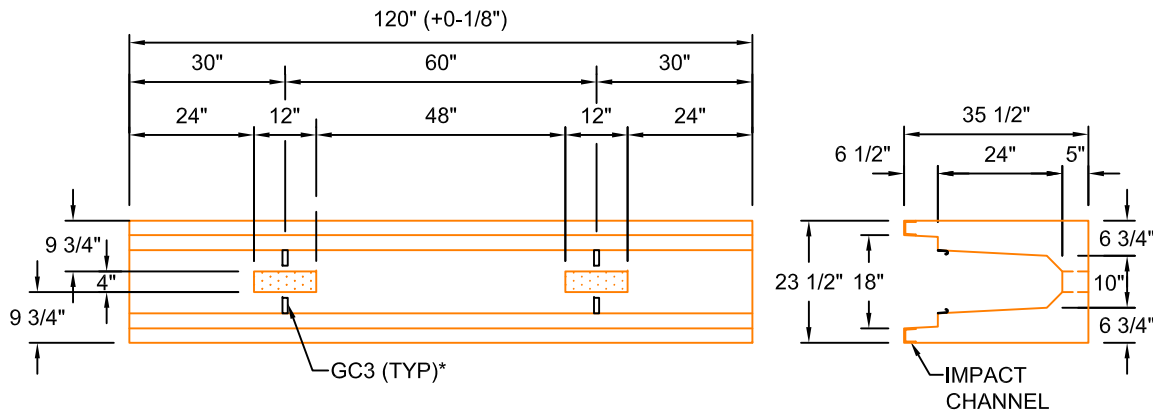


LHC10-120
 SCALE: 1/2"=1'-0"
 WEIGHT: 1123 #



TYPICAL ROAD CROSSING SECTION 10"W x 24"D

SCALE: 1"=1'-0"



BHC1024-120
 SCALE: 1/2" = 1'-0"
 WEIGHT: 4820 #

*GC3 (GROUND CLIPS) OPTIONAL

AASHTO HS20 DESIGN
(32,000 LBS / AXLE)

Trenwa Inc.		
1419 ALEXANDRIA PIKE FORT THOMAS, KY 41075 859-781-0831		
TYPICAL ROAD CROSSING BASE, LID & SECTION FOR 10" WIDE x 24" DEEP TRENCH		
Date:	Dwg. No.	
3/6/17	BHC1024-120	