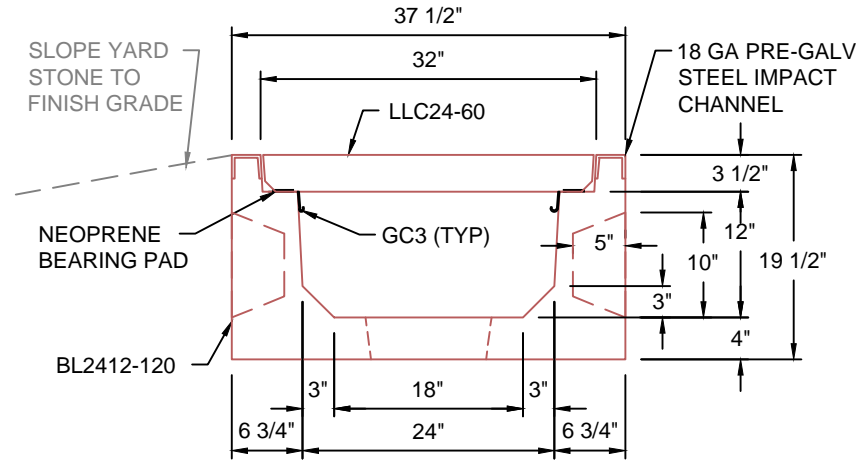
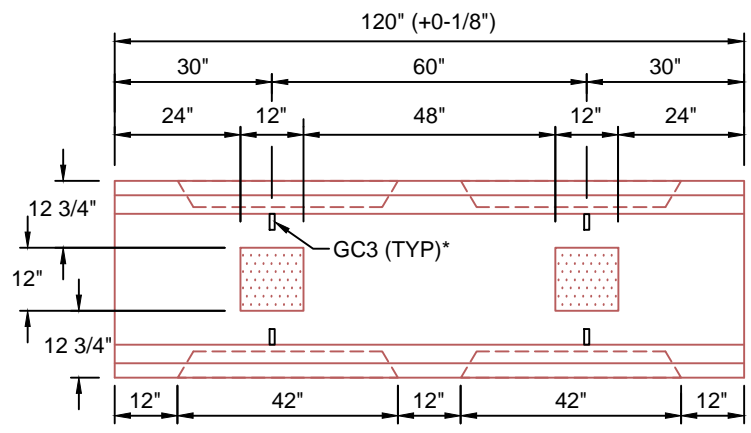


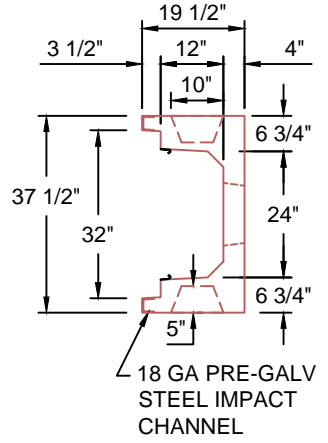
FX-16 (1/2") NC LIFTING INSERT AND MX-28 CAP
 BROOM FINISH AND EDGE
LLC24-60
 SCALE: 1/2" = 1'-0"
 WEIGHT: 550 #



TYPICAL LIGHT TRAFFIC SECTION WITH CONCRETE LID 24"W x 12"D
 SCALE: 1" = 1'-0"



BL2412-120
 SCALE: 1/2" = 1'-0"
 WEIGHT: 3080#



18 GA PRE-GALV STEEL IMPACT CHANNEL

H10 DESIGN
(16,000 LBS / AXLE)

Trenwa Inc.	
1419 ALEXANDRIA PIKE FORT THOMAS, KY 41075 859-781-0831	
TYPICAL LIGHT TRAFFIC BASE, CONCRETE LID & SECTION FOR 24" WIDE x 12" DEEP TRENCH	
Date: 10/16/2017	Dwg. No. BL2412-120