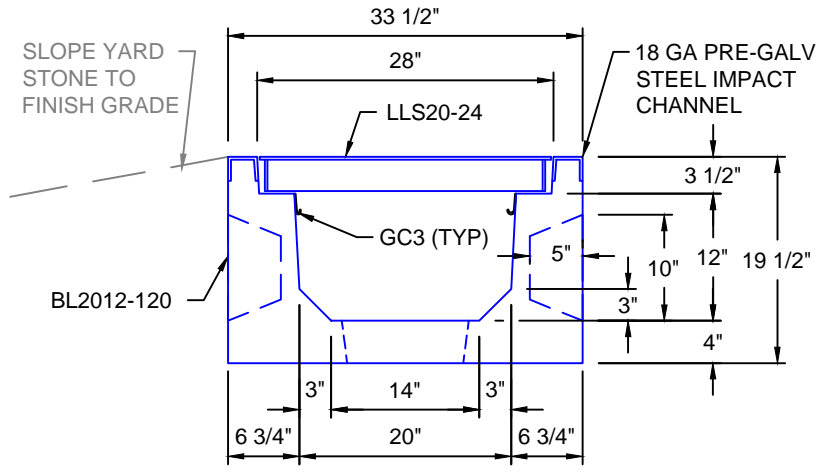
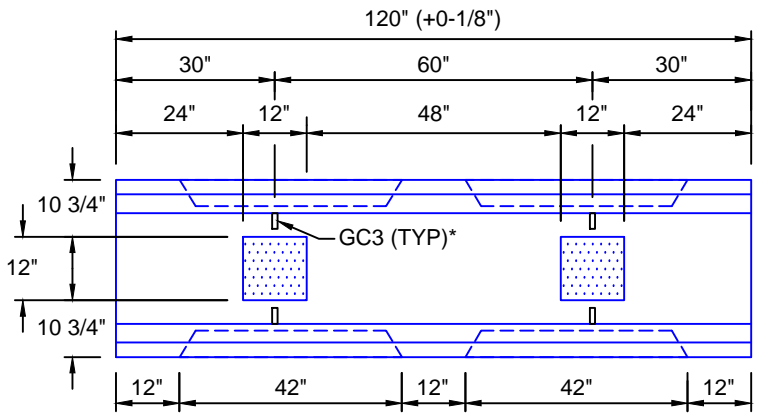


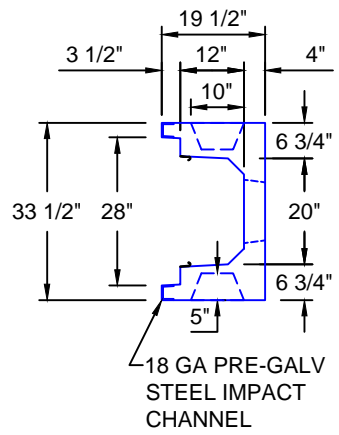
BILL OF MATERIAL	
QTY	DESCRIPTION
1	CHECKER PLATE, 27 1/2" x 23 15/16" x 1/4"
4	3" x 2" x 3/16" ANGLE, 26 1/2" LENGTH
2	3/16" x 2 1/2" FLAT BAR, 23 7/16" LENGTH
2	3/16" x 2 1/2" FLAT BAR, 23 7/16" LENGTH



TYPICAL LIGHT TRAFFIC SECTION WITH STEEL LID 20"W x 12"D
SCALE: 1" = 1'-0"



BL2012-120
SCALE: 1/2" = 1'-0"
WEIGHT: 2918 #



18 GA PRE-GALV STEEL IMPACT CHANNEL

H10 DESIGN
(16,000 LBS / AXLE)

Trenwa Inc.		
1419 ALEXANDRIA PIKE FORT THOMAS, KY 41075 859-781-0831		
TYPICAL LIGHT TRAFFIC BASE, STEEL LID & SECTION FOR 20" WIDE x 12" DEEP TRENCH		
Date:	Dwg. No.	
7/10/2017	BL2012-120	