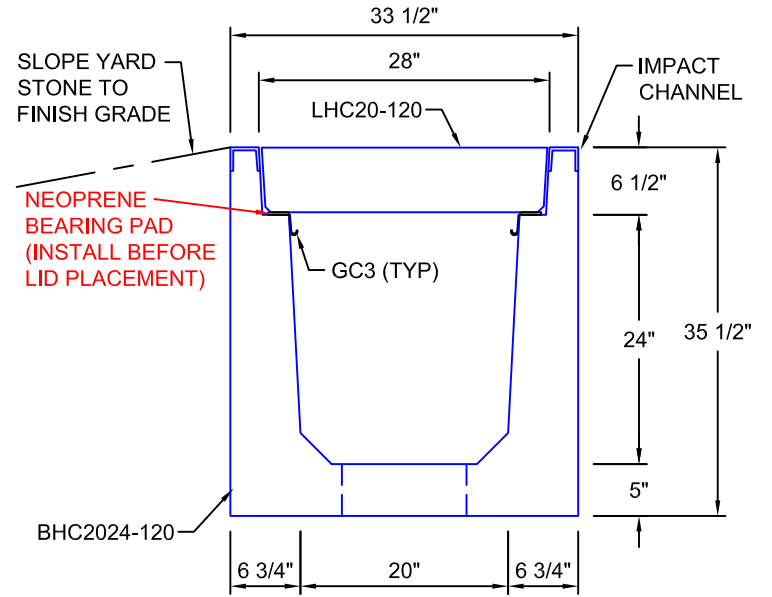
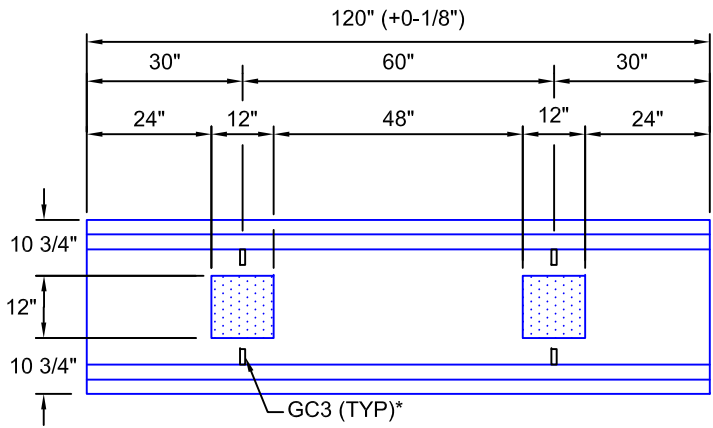


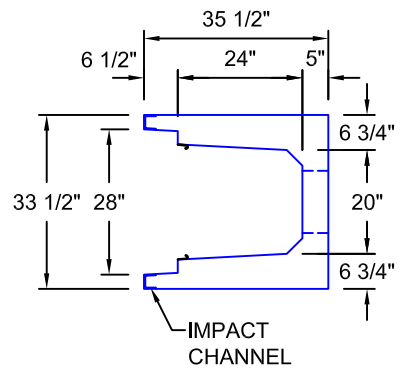
LHC20-120
 SCALE: 1/2"=1'-0"
 WEIGHT: 1783 #



TYPICAL ROAD CROSSING
SECTION 20"W x 24"D
 SCALE: 1"=1'-0"



BHC2024-120
 SCALE: 1/2" = 1'-0"
 WEIGHT: 5250 #



AASHTO HS20 DESIGN
(32,000 LBS / AXLE)

*GC3 (GROUND CLIPS) OPTIONAL

Trenwa Inc.		
1419 ALEXANDRIA PIKE FORT THOMAS, KY 41075 859-781-0831		
TYPICAL ROAD CROSSING BASE, LID & SECTION FOR 20" WIDE x 24" DEEP TRENCH		
Date:	Dwg. No.	
3/6/17	BHC2024-120	