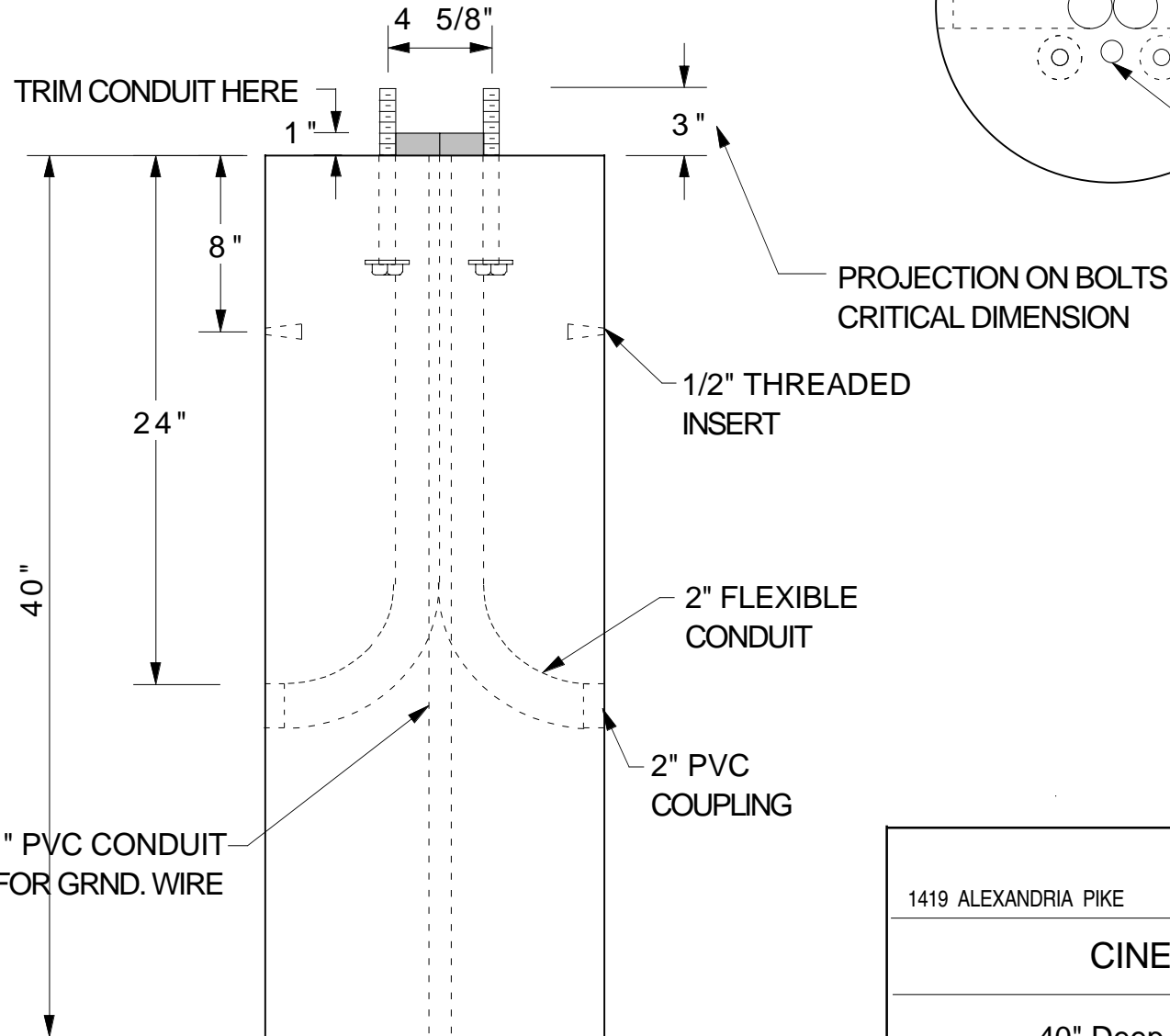
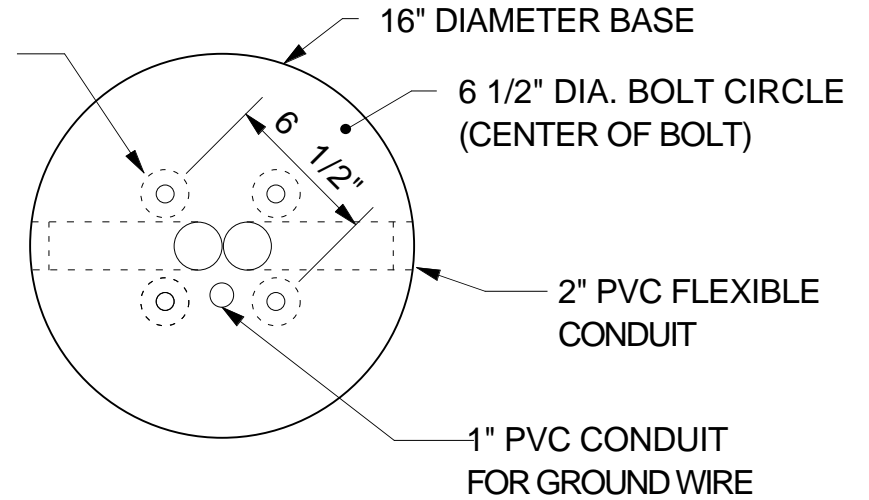


3/4" x 8" BOLT  
STAINLESS STEEL  
(TOTAL OF 4)



- CONCRETE: 5,000 psi @ 28 DAYS
- STEEL REINFORCING:  
4-#3 13" DIA. STIRRUPS &  
4-#3 x 37"
- WEIGHT: 700 #

SCALE: 1 1/2"=1'-0"

<b>TRENWA INC.</b>		
1419 ALEXANDRIA PIKE	FORT THOMAS, KY. 41075	859-781-0831
<b>CINERGY-Light Pole Base</b>		
40" Deep Base	DATE 3/18/03	DRAWING NO. SLB1640