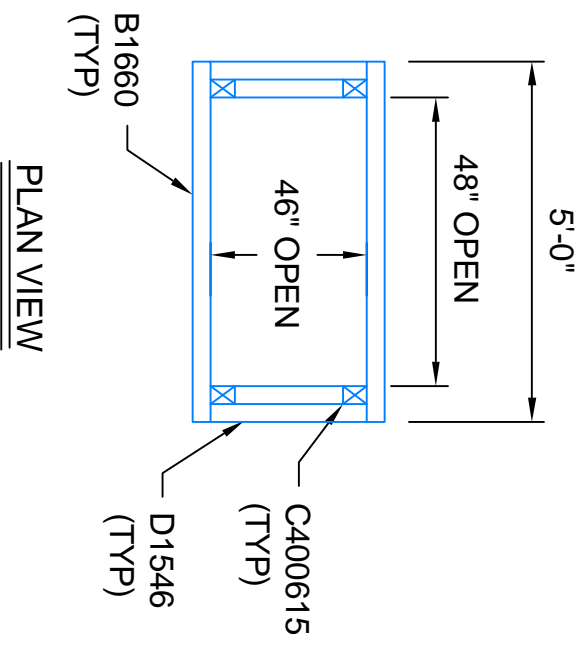
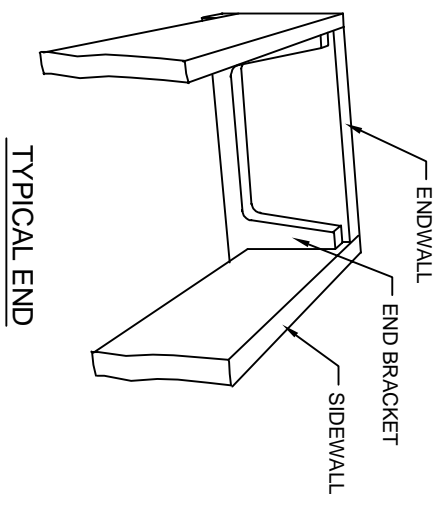


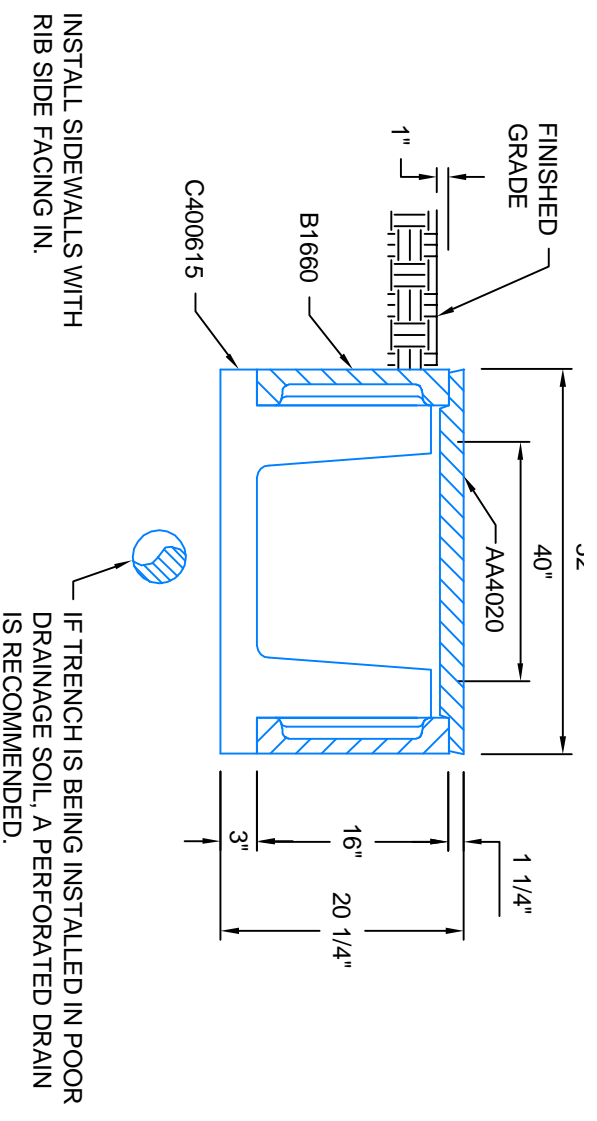
USE 1: 2-AA4020, 2-B1660,
2-C400615, 2-D1546.



PLAN VIEW



TYPICAL END



TYPICAL SECTION 40" WIDE 16" DEEP

BILL OF MATERIAL			
Quantity	Part Number	Description	Weight(lbs.)
3	AA4020	PEDESTRIAN LID	95
2	B1660	SIDEWALL	150
2	C400615	END BRACKET	120
2	D1546	ENDWALL	165
2	LT	LIFTING TOOL	2

Trenwa Inc.	
1419 ALEXANDRIA PIKE FORT THOMAS, KY. 41075	859-781-0831
PULLBOX4016-60	
COMPONENT TRENCH PULLBOX	
Date	Dwg. No.