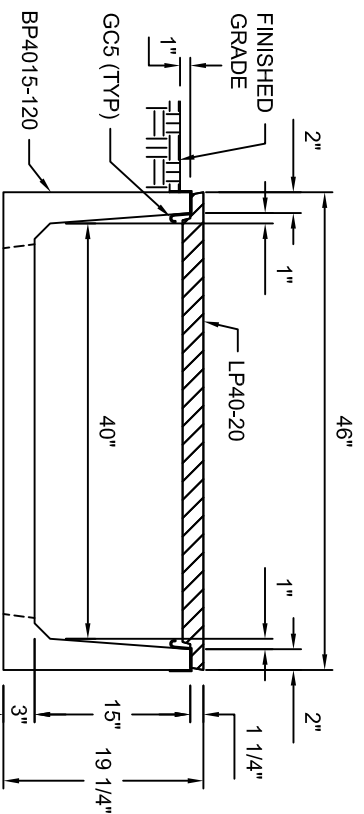
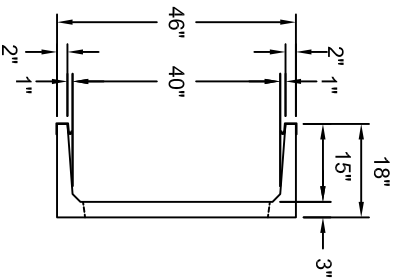
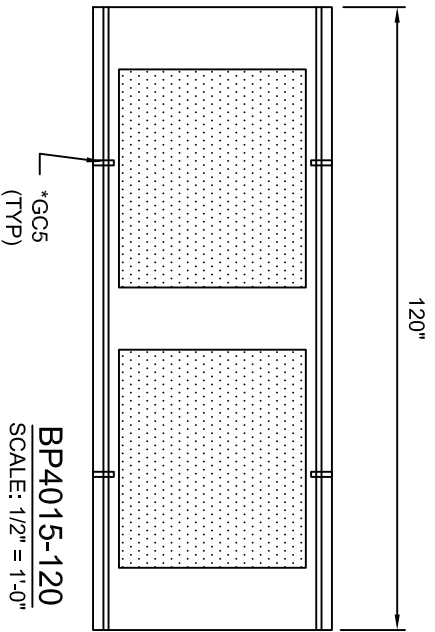


**LP40-20**  
SCALE: 1/2" = 1'-0"



IF TRENCH IS BEING  
INSTALLED IN POOR  
DRAINAGE SOIL, A  
PERFORATED DRAIN IS  
RECOMMENDED.

**TYPICAL PEDESTRIAN SECTION**

**40"W x 15"D**  
SCALE: 1" = 1'-0"

|  |                       |
|--|-----------------------|
| <b>Trenwa Inc.</b>   |                       |
| 1419 ALEXANDRIA PIKE   | FORT THOMAS, KY 41075 |
| 859-781-0831   |                       |
| <b>TYPICAL PEDESTRIAN BASE, LID &amp; SECTION FOR 40" WIDE x 15" DEEP TRENCH</b> |                       |
| Date:  | Dwg. No.              |
| 8/26/2008  | BP4015-120 STD        |

\*GCS (GROUND CLIPS) OPTIONAL