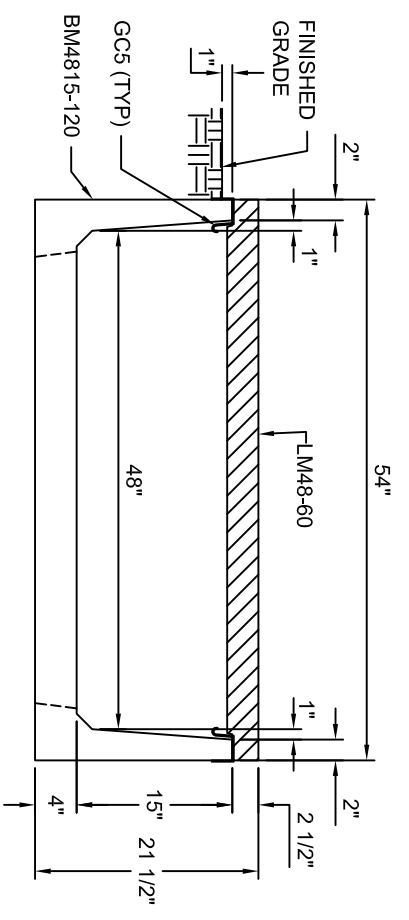
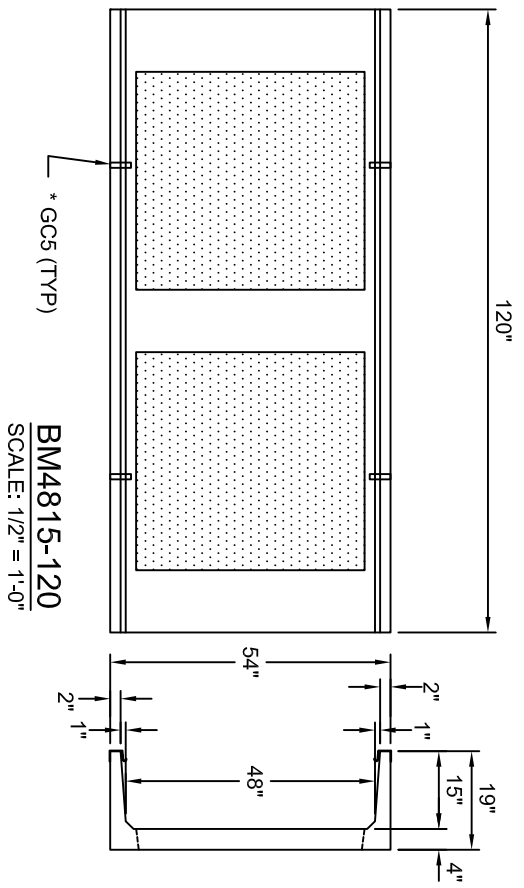


**LM48-60**  
SCALE: 1/2" = 1'-0"



IF TRENCH IS BEING  
INSTALLED IN POOR  
DRAINAGE SOIL, A  
PERFORATED DRAIN IS  
RECOMMENDED.

**TYPICAL MEDIUM VEHICLE  
SECTION 48"W X 15"D**  
SCALE: 1" = 1'-0"



**BM4815-120**  
SCALE: 1/2" = 1'-0"

**9,000# G.W.W. RATED**

**Trenwa Inc.**

1419 ALEXANDRIA PIKE	FORT THOMAS, KY 41075	859-781-0831
<b>TYPICAL MEDIUM VEHICLE BASE, LID &amp; SECTION FOR 48" WIDE X 15" DEEP TRENCH</b>		
Date:	Dwg. No.	
8/26/2008	BM4815-120 STD	

\*GCS (GROUND CLIPS) OPTIONAL