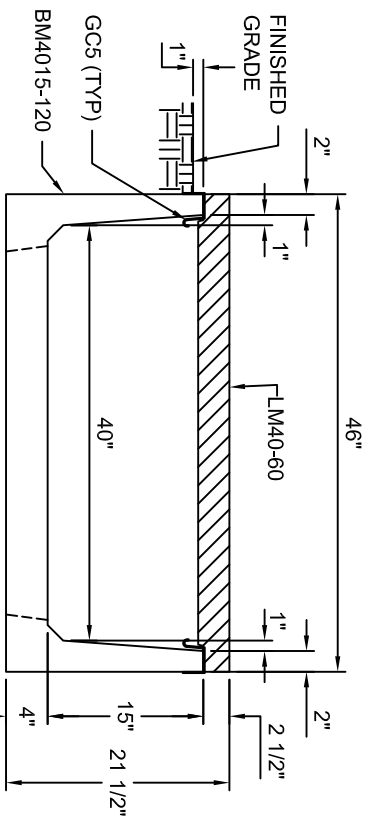
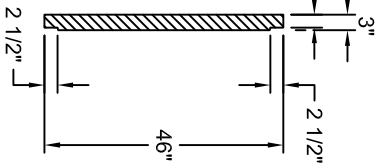


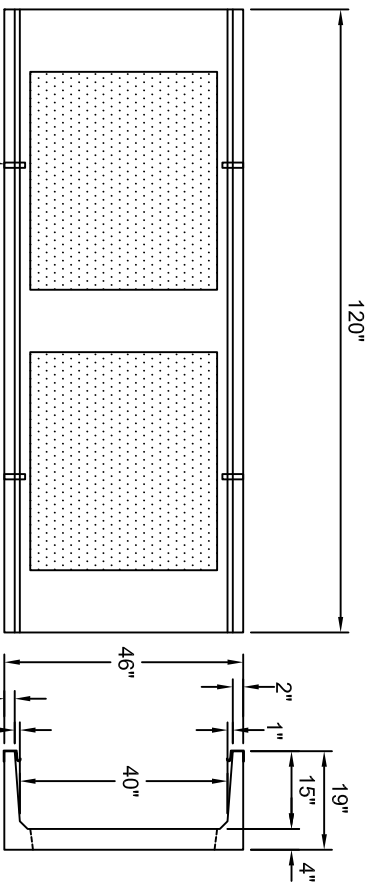
LM40-60
SCALE: 1/2" = 1'-0"



IF TRENCH IS BEING
INSTALLED IN POOR
DRAINAGE SOIL, A
PERFORATED DRAIN IS
RECOMMENDED.

**TYPICAL MEDIUM VEHICLE
SECTION 40"W X 15"D**

SCALE: 1" = 1'-0"



9,000# GVW. RATED

Trenwa Inc.

1419 ALEXANDRIA PIKE FORT THOMAS, KY 41075	859-781-0831
TYPICAL MEDIUM VEHICLE BASE, LID & SECTION FOR 40" WIDE X 15" DEEP TRENCH	
Date: 8/26/2008	Dwg. No. BM4015-120 STD

*GCS (GROUND CLIPS) OPTIONAL