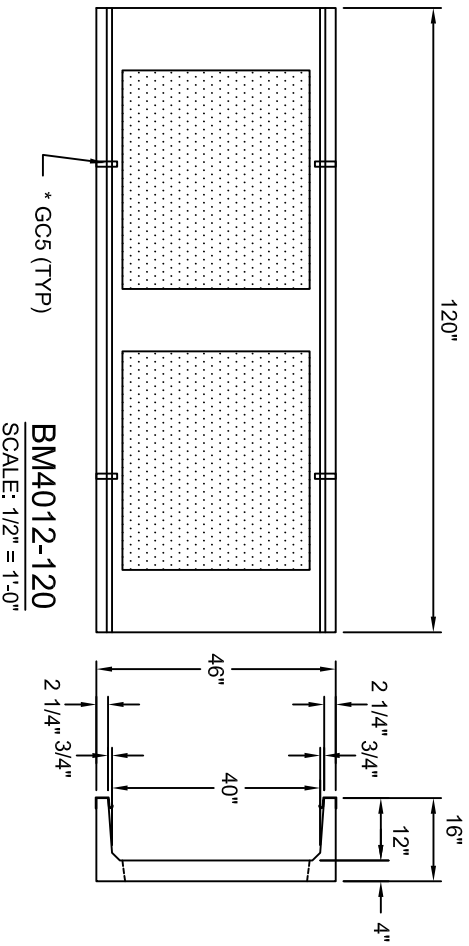


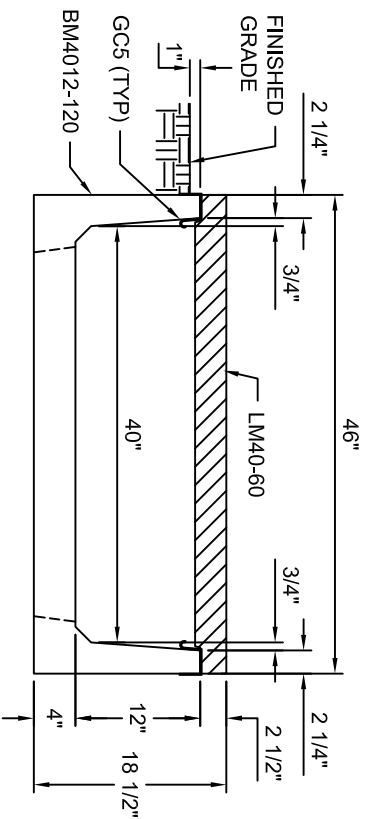
LM40-60

SCALE: 1/2" = 1'-0"



* GCS (TYP)

BM4012-120
SCALE: 1/2" = 1'-0"



IF TRENCH IS BEING
INSTALLED IN POOR
DRAINAGE SOIL, A
PERFORATED DRAIN IS
RECOMMENDED.

TYPICAL MEDIUM VEHICLE

SECTION 40"W X 12"D

SCALE: 1" = 1'-0"

9,000# GVW. RATED

Trenwa Inc.

1419 ALEXANDRIA PIKE FORT THOMAS, KY 41075 859-781-0831

TYPICAL MEDIUM VEHICLE BASE, LID &
SECTION FOR 40" WIDE X 12" DEEP TRENCH

Date: Dwg. No.

8/28/2008 BM4012-120 STD

*GCS (GROUND CLIPS) OPTIONAL