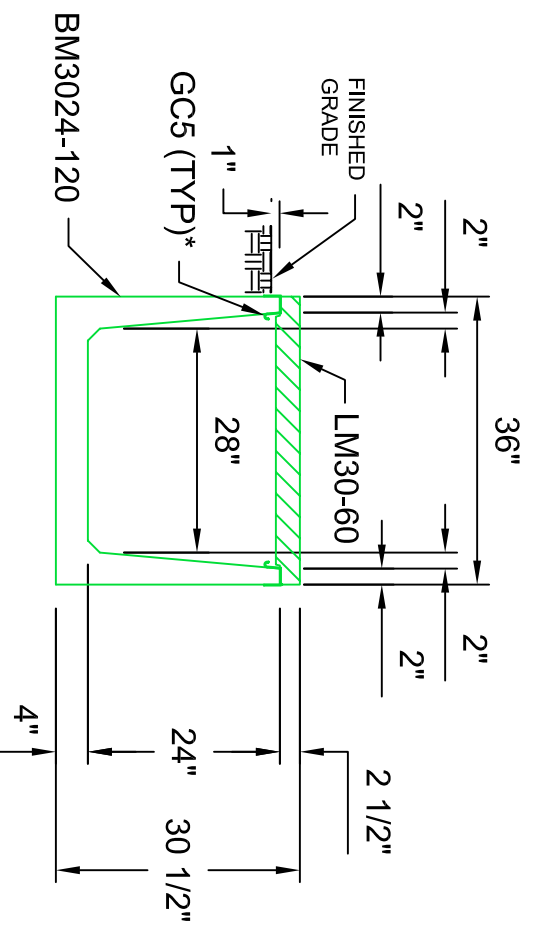
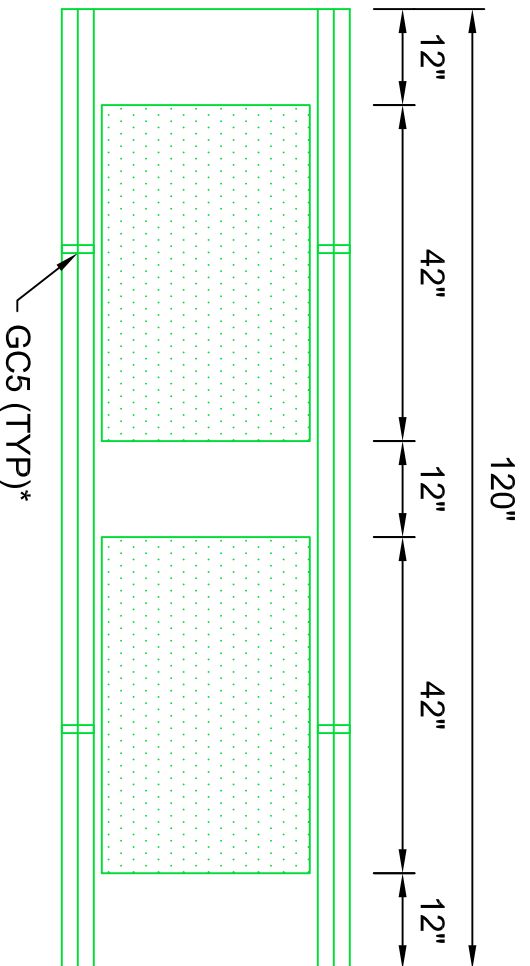


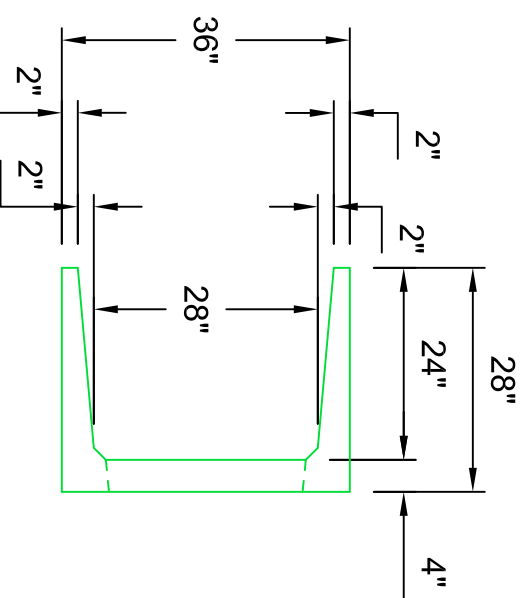
LM30-60



TYPICAL SECTION 7000#
30"W x 24"D



BM3024-120



Trenwa Inc.

1419 ALEXANDRIA PIKE FORT THOMAS, KY 41075 859-781-0831

TYPICAL ONE PIECE 7K LOADING BASE, LID & SECTION FOR 30" WIDE x 24" DEEP TRENCH

Date: 10/31/05

Dwg. No. BM3024-120

Scale: 1/2" = 1'-0"

*GCS (GROUND CLIPS) OPTIONAL