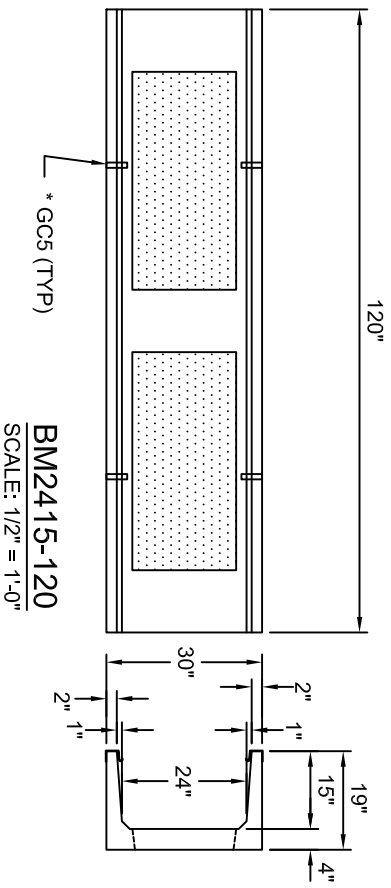
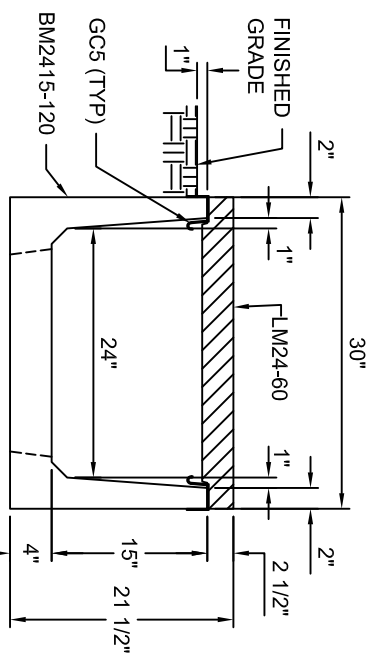


**LM24-60**  
SCALE: 1/2" = 1'-0"



**BM2415-120**  
SCALE: 1/2" = 1'-0"



IF TRENCH IS BEING  
INSTALLED IN POOR  
DRAINAGE SOIL, A  
PERFORATED DRAIN IS  
RECOMMENDED.

**TYPICAL MEDIUM VEHICLE  
SECTION 24"W X 15"D**  
SCALE: 1" = 1'-0"

\*GCS (GROUND CLIPS) OPTIONAL

**9,000# GVW, RATED**

<b>Trenwa Inc.</b>	
1419 ALEXANDRIA PIKE FORT THOMAS, KY 41075	859-781-0831
<b>TYPICAL MEDIUM VEHICLE BASE, LID &amp; SECTION FOR 24" WIDE X 15" DEEP TRENCH</b>	
Date: 8/26/2008	Dwg. No. BM2415-120 STD