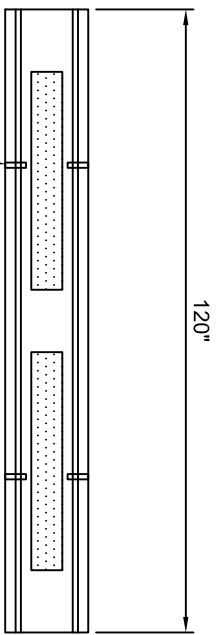


LM10-60

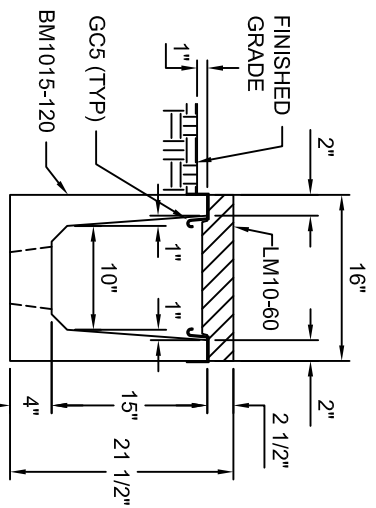
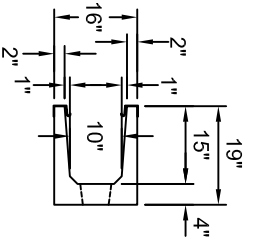
SCALE: 1/2" = 1'-0"



BM1015-120

SCALE: 1/2" = 1'-0"

* GCS (TYP)



IF TRENCH IS BEING
 INSTALLED IN POOR
 DRAINAGE SOIL, A
 PERFORATED DRAIN IS
 RECOMMENDED.

TYPICAL MEDIUM VEHICLE

SECTION 10"W X 15"D

SCALE: 1" = 1'-0"

9,000# GVW. RATED

Trenwa Inc.

1419 ALEXANDRIA PIKE FORT THOMAS, KY 41075 859-781-0831

TYPICAL MEDIUM VEHICLE BASE, LID & SECTION FOR 10" WIDE X 15" DEEP TRENCH

Date: 8/26/2008 Dwg. No. BM1015-120 STD

*GCS (GROUND CLIPS) OPTIONAL